

# Child Welfare

## Outcome Measures & Results

### December 2012 (Reflects data as of October 31, 2012)



Federal Regulations & Data

# Definitions and Data Sources

## **SAFETY 1 – Children are first and foremost, protected from abuse and neglect.**

**Figure 1: Child Protective Services Cases** .....1  
Count of unique CPS Investigations or Family Preservation (Ongoing) stages open at any point during the month. Includes all cases active at some time during the month.  
Sources: Internal Data System, SHINES

**Figure 2: Recurrence of Substantiated Child Maltreatment**..... 1  
Of all the children who were victims of substantiated maltreatment in the first 6 months of the year, the percentage that had substantiated maltreatment within the following 6 months.  
*National Standard: less than or equal to 5.40%*  
Sources: Protective Services Data System, SHINES

**Figure 3: Disposition of Child Abuse and Neglect Reports**..... 2  
Chart reflects the disposition of reports received in a particular month. Data includes count of Family Support, Substantiated Investigations, Unsubstantiated Investigations and Screenouts.  
Source: SHINES

**Figure 4: Disposition of Child Abuse and Neglect Reports**..... 2  
Chart reflects the disposition of reports received in a particular month. Data includes count of Family Preservation (Substantiated and Unsubstantiated Open), Foster Care (Substantiated and Unsubstantiated Open), Substantiated and Unsubstantiated Closed.  
Source: SHINES

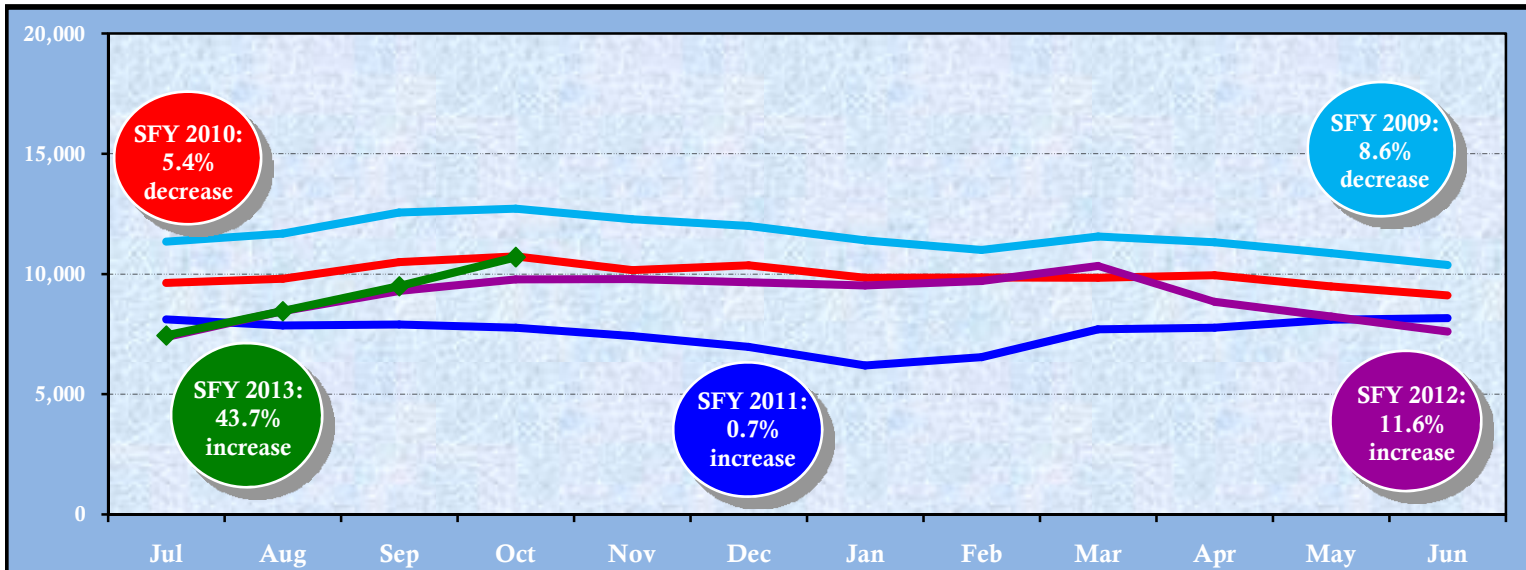
## Definitions and Data Sources cont...

### **PERMANENCY 1 – Children have permanency and stability in their living situations.**

- Figure 5: Child Placement Services Cases** .....3  
Count of unique children in foster care or adoptions stages open at any point during the month and cases active at some time during the month. This population may include children not in DFCS custody.  
Sources: Internal Data System, SHINES
- Figure 6: Children in the Legal Custody of DFCS** ..... 3  
Count of unique children who were in the legal custody of DFCS at some point during the month, including those 18 years of age and older. Excludes Aftercare, ICPC, Placement services to parents, and Boarding County.  
Source: SHINES
- Figure 7: Children in the Legal Custody of DFCS Under the Age 18**.....4  
Count of unique children who were in the legal custody of DFCS at some point during the month under the age 18. Excludes Aftercare, ICPC, Placement services to parents, and Boarding County.  
Source: SHINES
- Figure 8: Length of Time to Achieve Reunification**.....4  
Percentage of children who exited care during the month through reunification with their family that reunified in less than 12 months from the date of their removal.  
*National Standard: greater than or equal to 76.20%*  
Source: SHINES
- Figure 9: Comparison of Foster Care Entries & Exits**.....5  
Number of children who have entered foster care and number of children who have exited foster care during the month. Total children at end of month show the number of children on the last day of the month.  
Source: SHINES
- Figure 10: Foster Care Re-entries**.....5  
Of all the children who entered foster care, the percentage that were discharged from a previous placement within 12 months of the current foster care placement.  
*National Standard: less than or equal to 8.60%*  
Source: SHINES
- Figure 11: Children Placed with Relatives**.....6  
Of all children in DFCS custody, the percentage that are placed with a relative or a relative foster home.  
*State Target: greater than or equal to 30.00%*  
Source: SHINES
- Figure 12: Adoptions Finalized**.....6  
The number of children whose adoption was finalized.  
Source: SHINES

# SAFETY-RELATED OUTCOMES

## Number of Child Protective Services Cases (includes Investigations and Family Preservation cases)



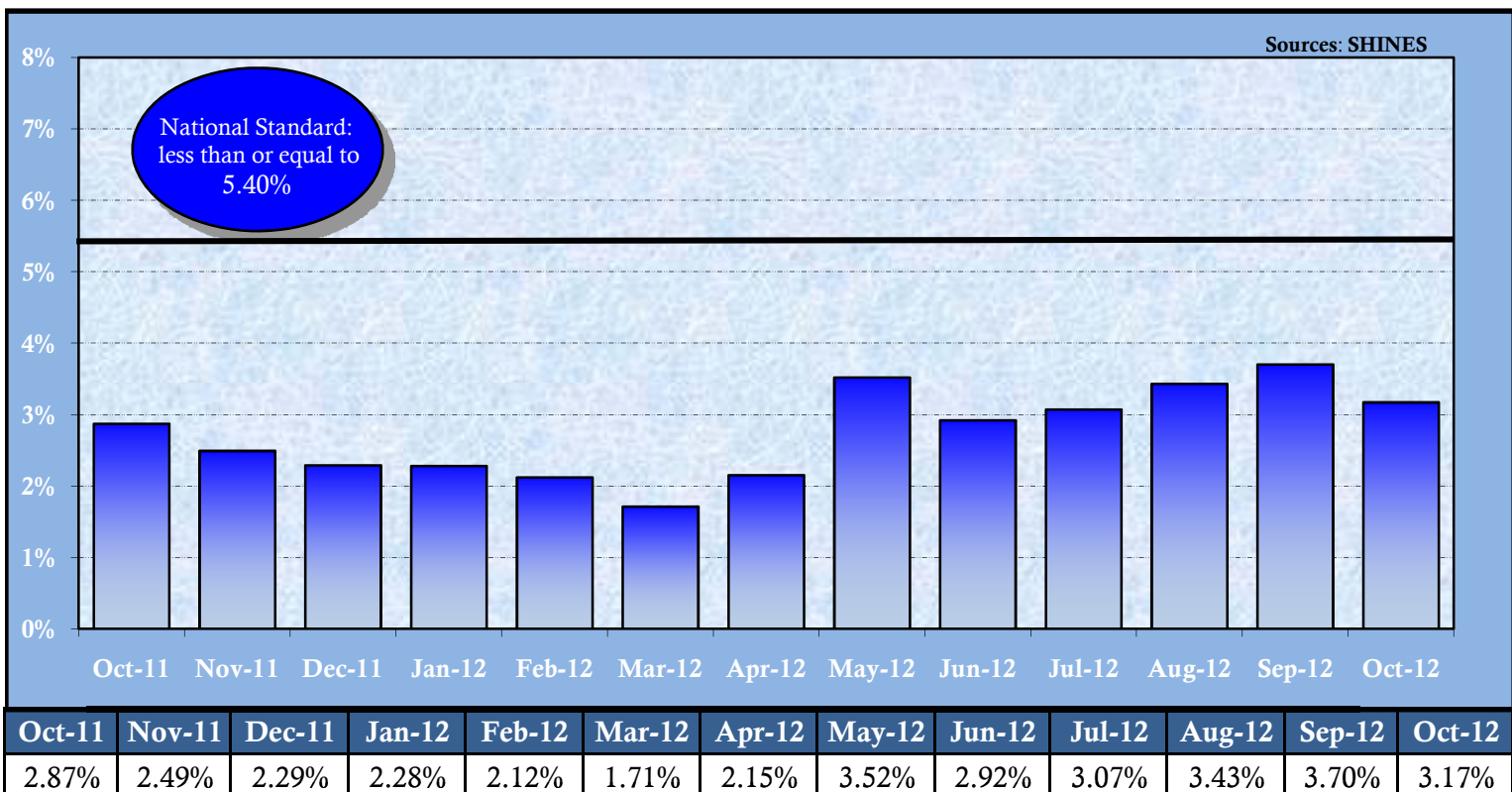
Def: Count of unique CPS Investigations or Family Preservation (Ongoing) stages open at any point during the month. Percentages show the beginning to the ending of each SFY.

Sources: SHINES

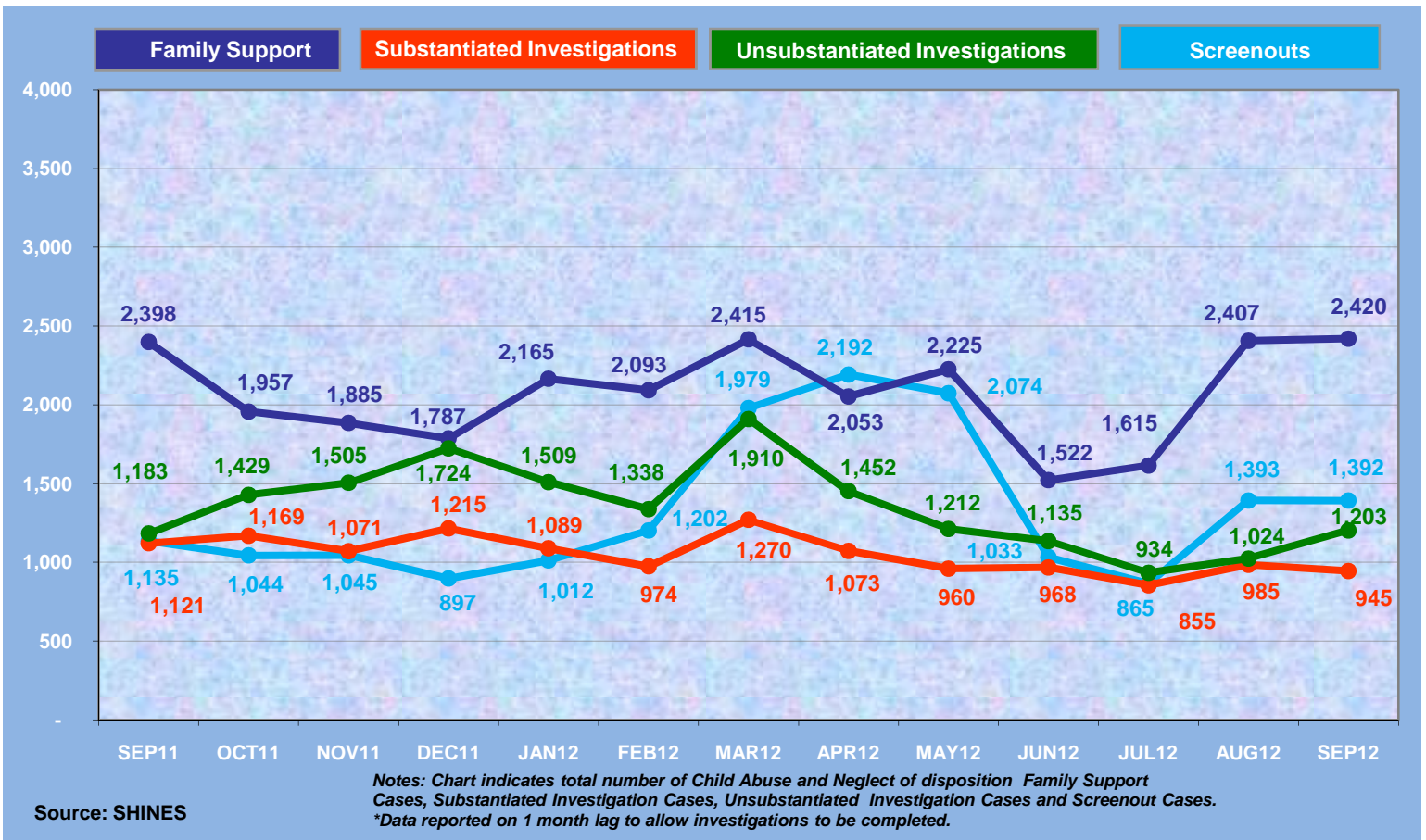
SFY	Jul	Aug	Sep	Oct	Nov	Dec	Jan	Feb	Mar	Apr	May	Jun
SFY 13	7,441	8,449	9,489	10,696								
SFY 12	7,373	8,451	9,291	9,776	9,786	9,650	9,521	9,707	10,338	8,836	8,228	7,606
SFY 11	8,103	7,855	7,895	7,765	7,410	6,969	6,189	6,542	7,696	7,768	8,098	8,163
SFY 10	9,624	9,796	10,489	10,734	10,165	10,357	9,833	9,856	9,834	9,950	9,479	9,105
SFY 09	11,345	11,679	12,556	12,713	12,279	11,990	11,391	10,999	11,556	11,324	10,866	10,372

## Recurrence of Substantiated Child Maltreatment (October 2011 – October 2012)

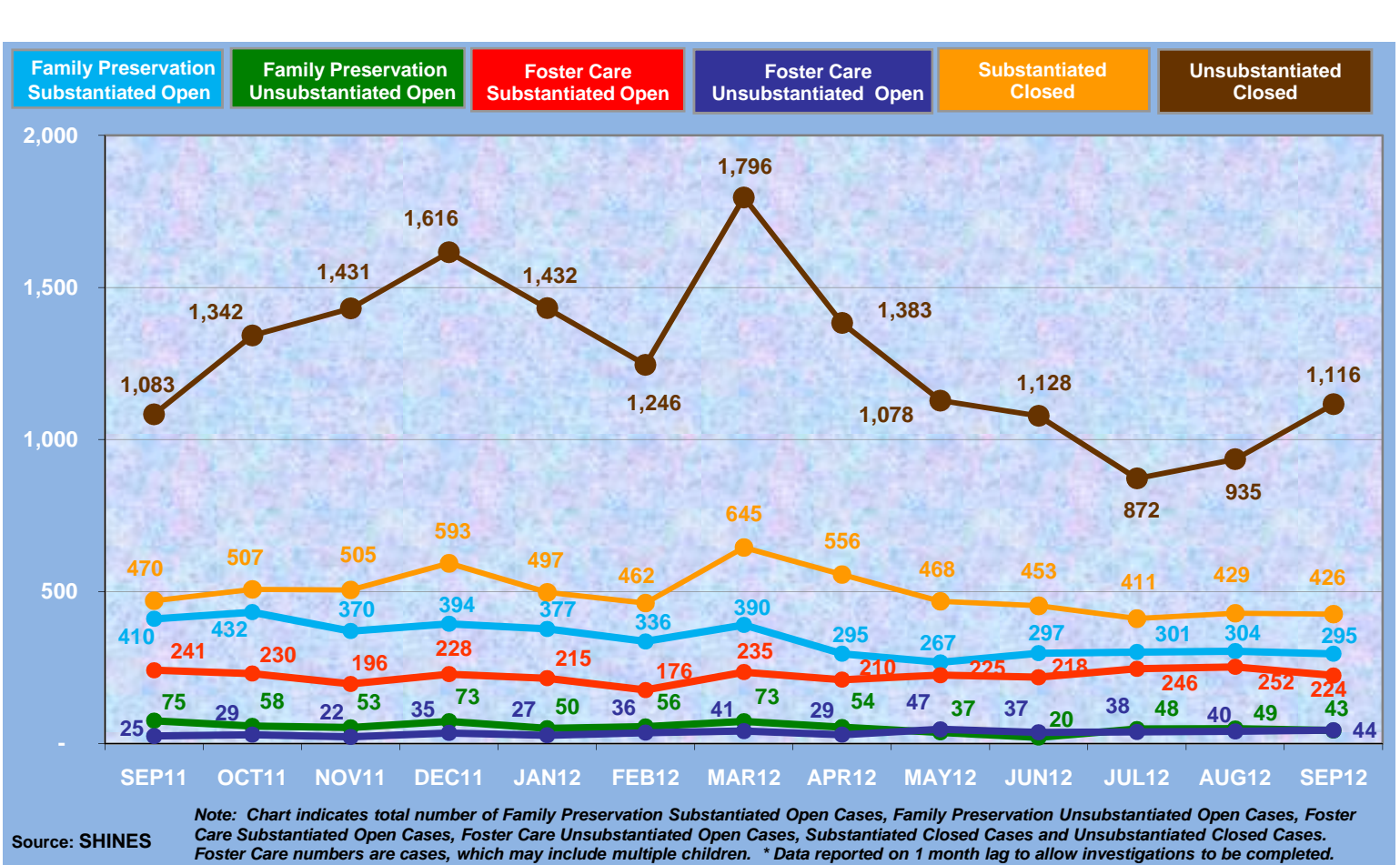
Def: Of all children who were victims of substantiated maltreatment in the first 6 months of the year, the percentage that had a substan. report of maltreatment within the following 6 months. This is calculated with a two-month lag.



## Disposition of Child Abuse and Neglect Reports (October 2012)

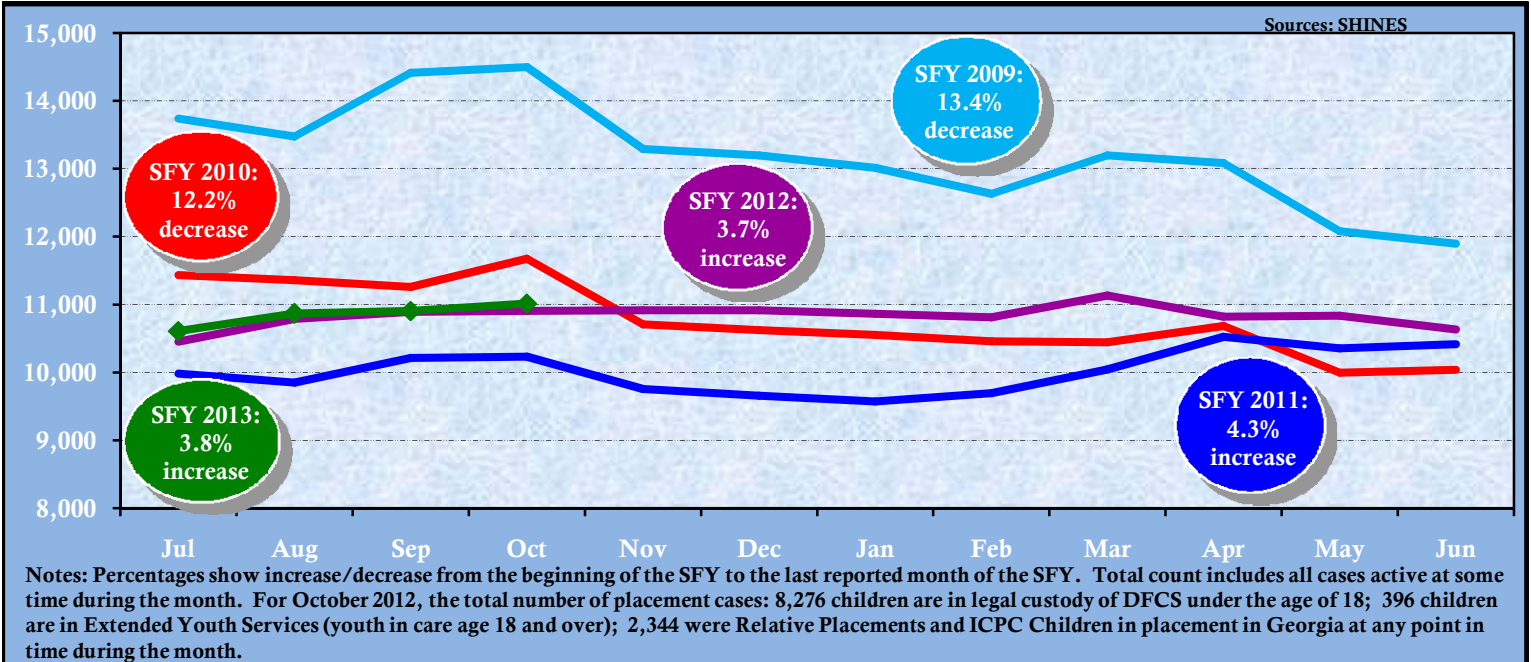


## Disposition of Child Abuse and Neglect Reports (October 2012)



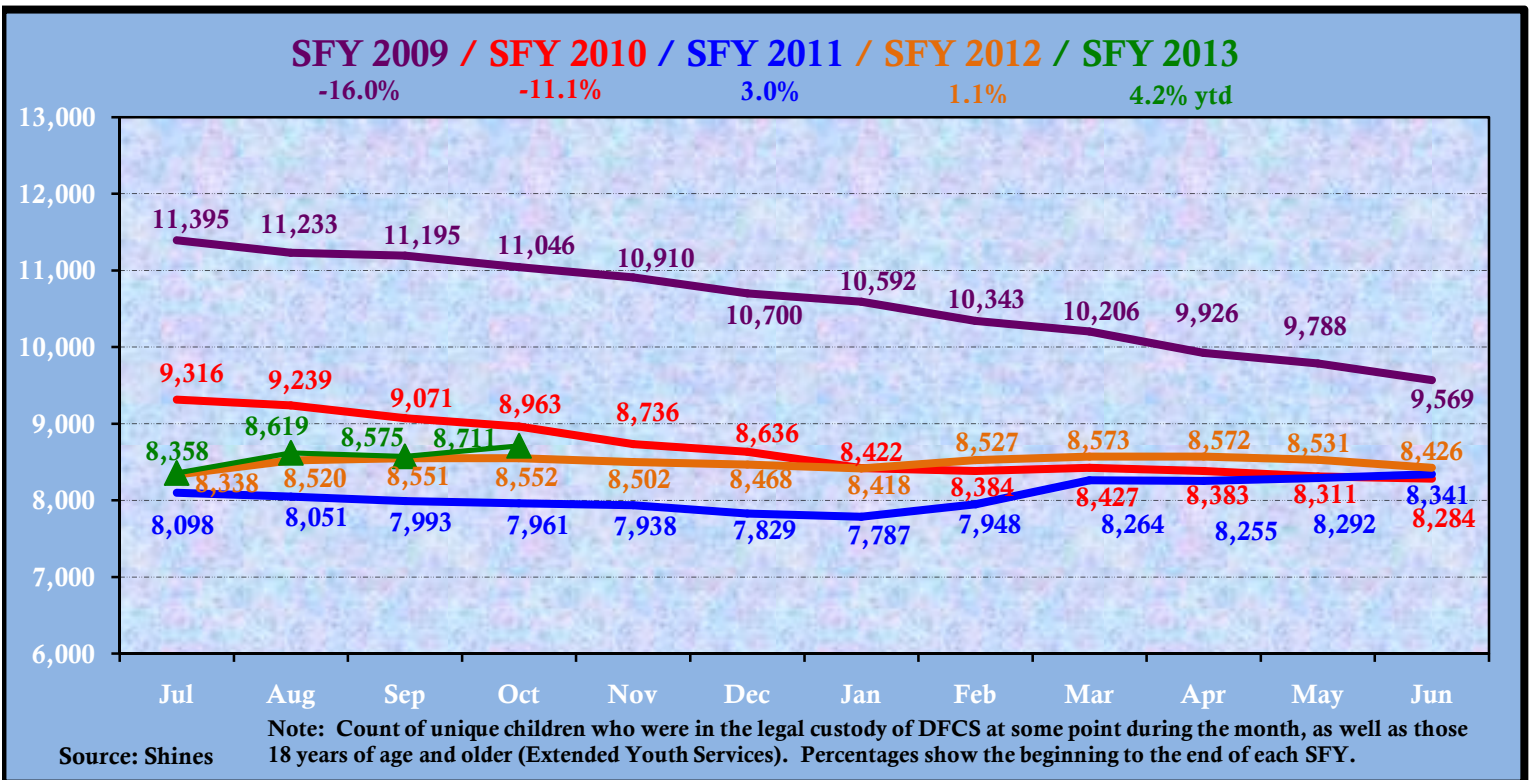
# PERMANENCY- RELATED OUTCOMES

## Number of Child Placement Services Cases (October 2012)



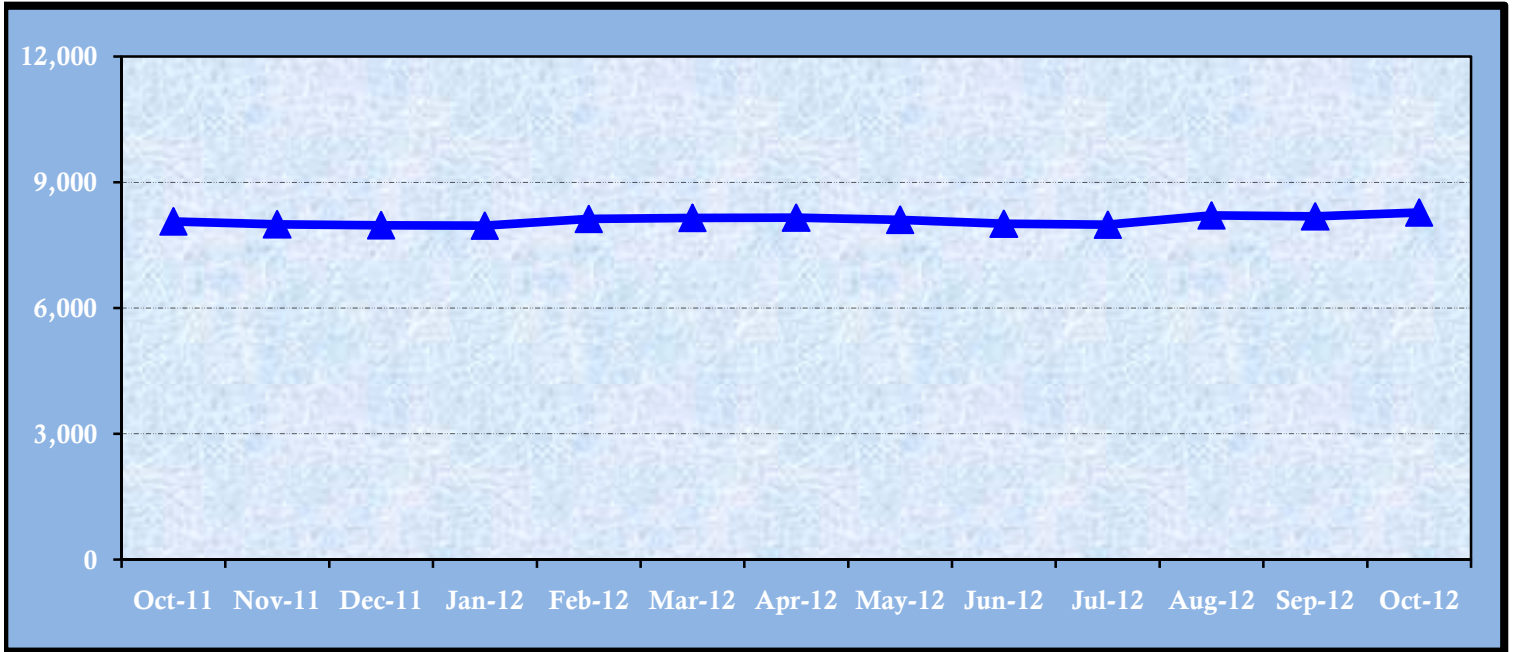
SFY	Jul	Aug	Sep	Oct	Nov	Dec	Jan	Feb	Mar	Apr	May	Jun
SFY 13	10,610	10,871	10,907	11,016								
SFY 12	10,457	10,788	10,893	10,908	10,917	10,919	10,863	10,813	11,135	10,823	10,839	10,634
SFY 11	9,985	9,853	10,215	10,234	9,758	9,660	9,572	9,698	10,047	10,526	10,355	10,419
SFY 10	11,437	11,362	11,260	11,676	10,708	10,625	10,552	10,462	10,446	10,687	9,997	10,041
SFY 09	13,739	13,479	14,417	14,499	13,292	13,198	13,014	12,632	13,201	13,086	12,081	11,898

## Number of Children in the Legal Custody of DFCS (October 2012)



### Children in the Legal Custody of DFCS Under the Age of 18 (October 2011 - October 2012)

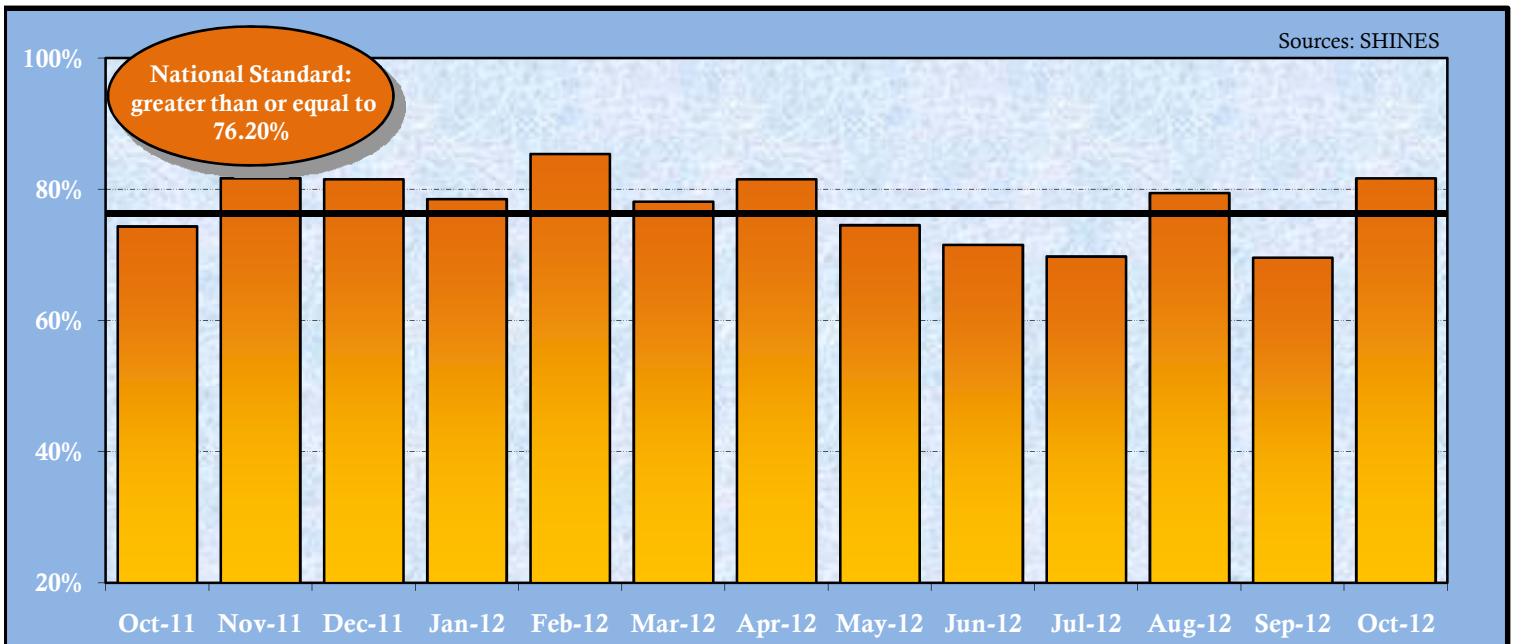
Def: Count of unique children who were in the legal custody of DFCS at some point during the month under the age 18. Excludes Aftercare, ICPC, Placement services to parents, and Boarding County.



Oct-11	Nov-11	Dec-11	Jan-12	Feb-12	Mar-12	Apr-12	May-12	Jun-12	Jul-12	Aug-12	Sep-12	Oct-12
8,065	7,998	7,975	7,965	8,125	8,150	8,156	8,105	8,009	7,988	8,207	8,184	8,276

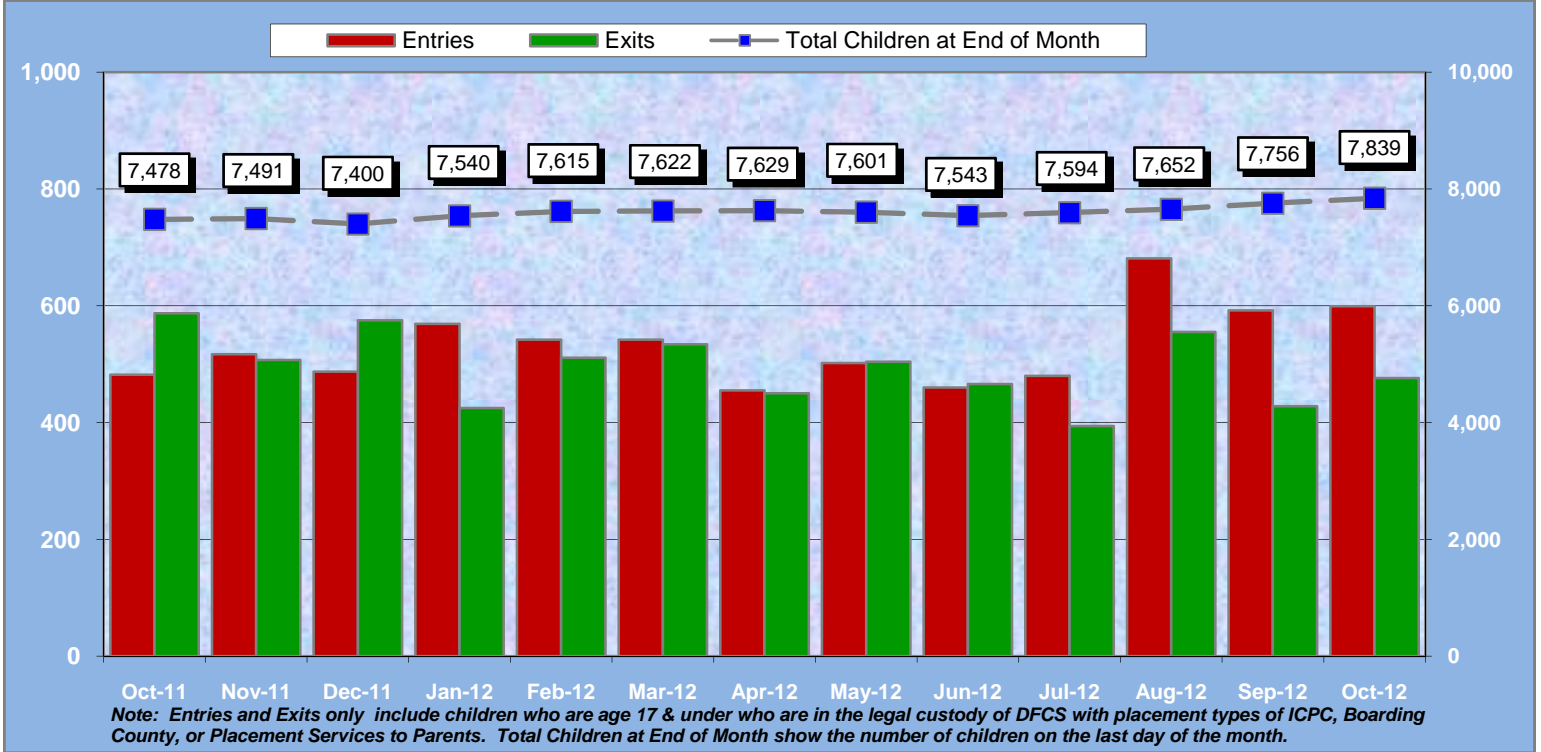
### Length of Time to Reunification (October 2011 - October 2012)

Def: Percentage of children who exited care during the month through reunification with their family that reunified in less than 12 months from the date of their last removal.



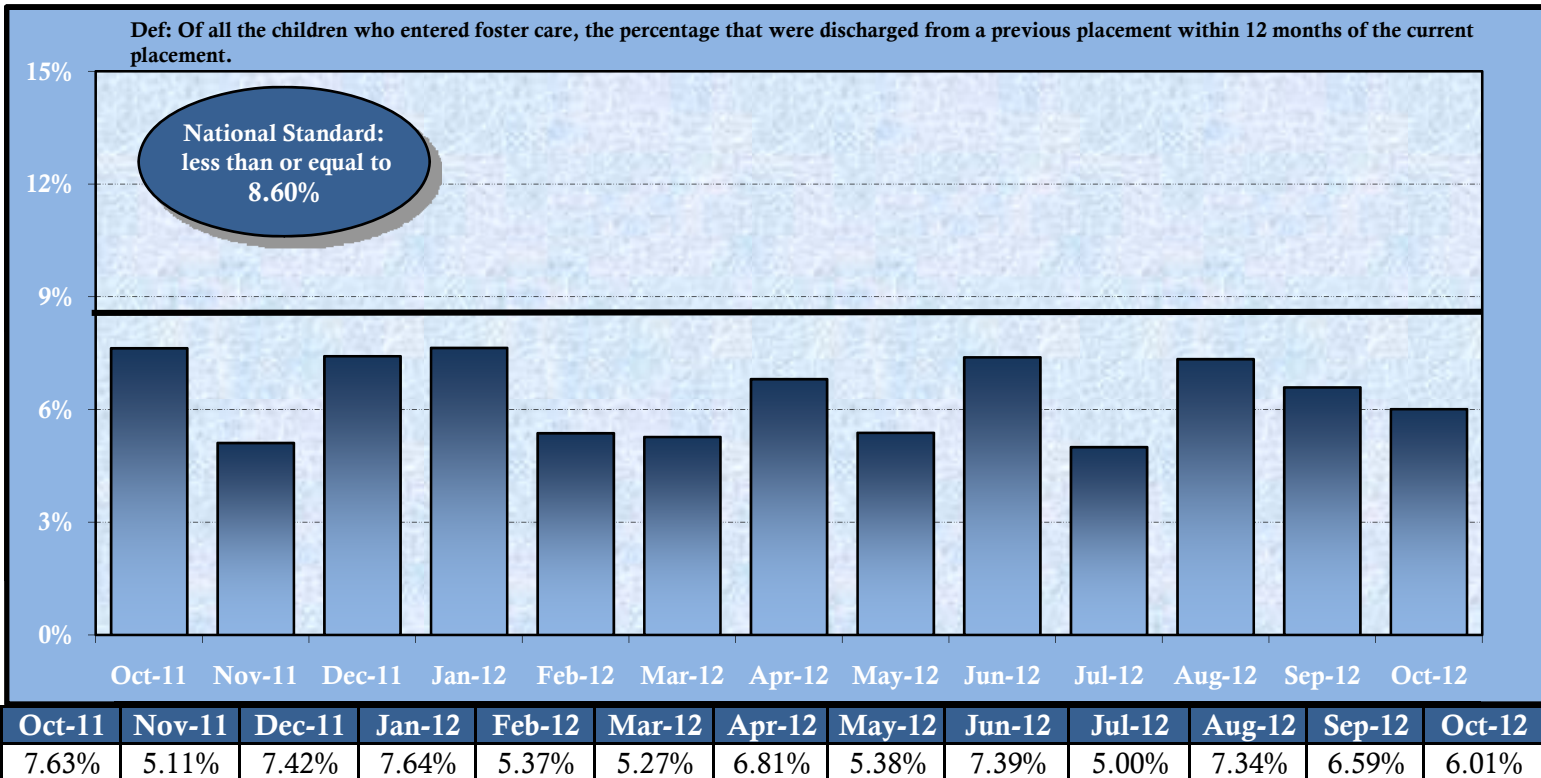
Oct-11	Nov-11	Dec-11	Jan-12	Feb-12	Mar-12	Apr-12	May-12	Jun-12	Jul-12	Aug-12	Sep-12	Oct-12
74.35%	81.73%	81.56%	78.54%	85.42%	78.13%	81.56%	74.56%	71.54%	69.77%	79.44%	69.60%	81.70%

### Comparison of Foster Care Entries and Exits (October 2011 - October 2012)



Oct-11	Nov-11	Dec-11	Jan-12	Feb-12	Mar-12	Apr-12	May-12	Jun-12	Jul-12	Aug-12	Sep-12	Oct-12
482	517	487	569	542	542	455	502	460	480	681	592	599
587	507	575	425	511	534	450	504	466	394	555	428	476

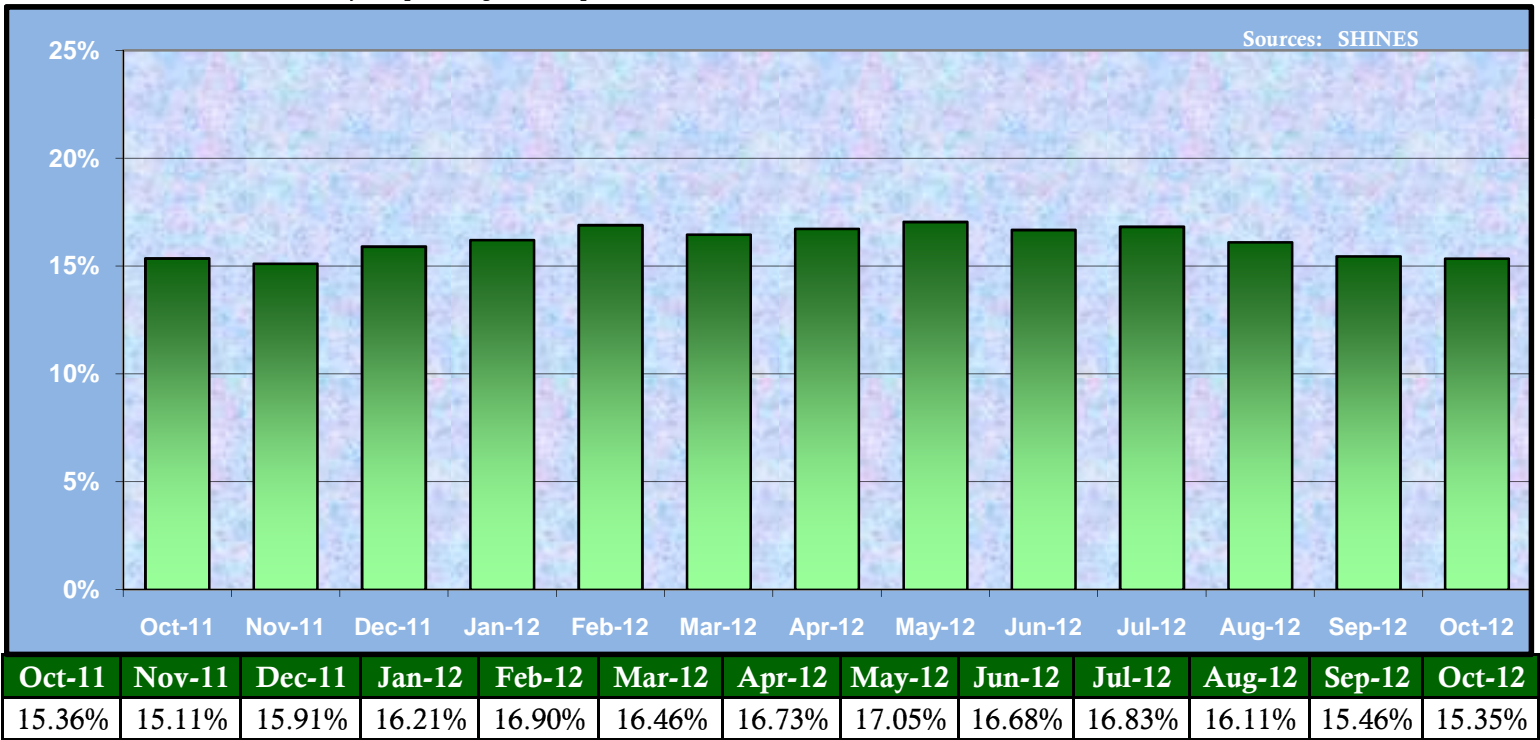
### Foster Care Re-Entry Rate (October 2011 - October 2012)





## Percent of Children Placed with Relatives (October 2011 – October 2012)

Def: Of all children in DFCS custody, the percentage that are placed with a relative or relative foster home.



## Number of Finalized Adoptions (October 2011 – October 2012)

Def: The number of children whose adoption was finalized. Totals for all months are updated.

