

**OFFICE OF INVESTIGATIVE SERVICES
POLICY AND PROCEDURE #210**

ORGANIZATIONAL OVERVIEW AND CHARTS

ORGANIZATIONAL OVERVIEW:

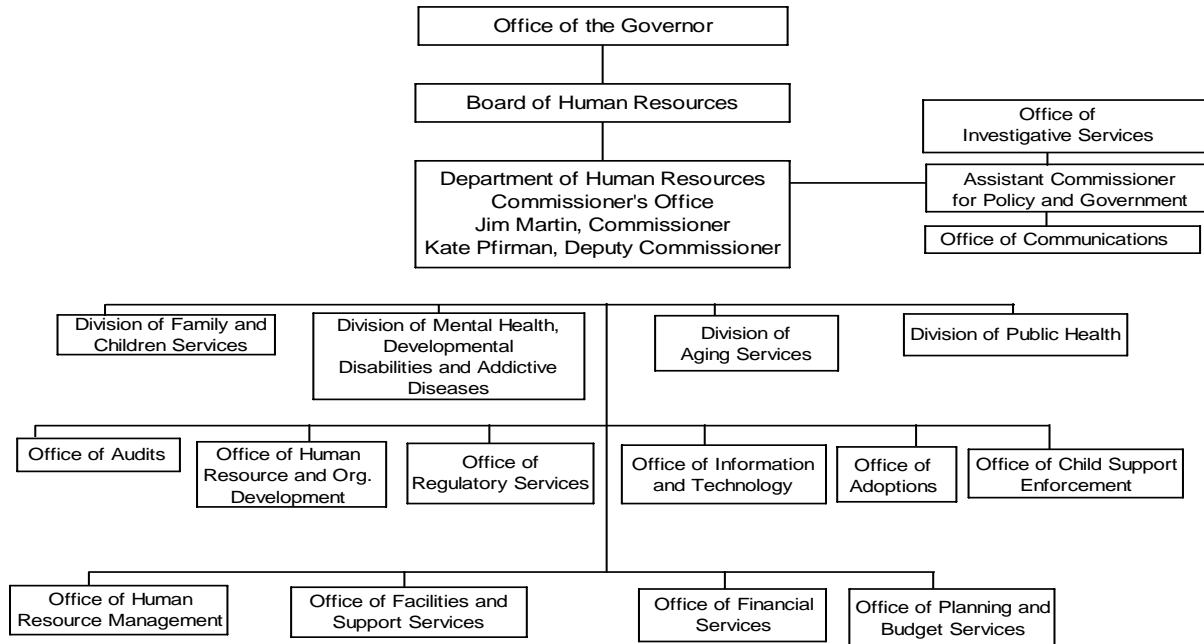
The Georgia Department of Human Resources (DHR) operates under general policy set by the Board of Human Resources which is appointed by the Governor and confirmed by the Senate. DHR is headed by a Commissioner who is appointed by the Board, subject to the approval of the Governor.

The Office of Investigative Services operates as a part of the DHR Office of the Commissioner. The organization charts for DHR and OIS are presented for the purpose of:

- Identifying responsibility, authority, and accountability;
- Establishing reporting relationships and communication channels;
- Identifying the division of work in order to avoid overlaps and conflicts; and
- Assisting others in understanding the organization.

ORGANIZATIONAL OVERVIEW AND CHARTS (continued)

GEORGIA DEPARTMENT OF HUMAN RESOURCES ORGANIZATION CHART:



ORGANIZATIONAL OVERVIEW AND CHARTS (continued)

OFFICE OF INVESTIGATIVE SERVICES ORGANIZATION CHART:

