



**Georgia Department  
of Human Services**

# **DFCS Updates & mCase Highlights**

Mary Havick | Deputy Commissioner, Child Welfare

# Data Overview

---

- Programs and outcome views
  - Current and historical
- DFCS data is available on demand
  - <https://dhs.georgia.gov/organization/about/dhs-data>





# Department of Human Services Division of Family & Children Services



- ▼ About Us
- ▼ County Offices
- ▼ Services
- ▼ Data
- ▼ Newsroom
- Public Notices
- DHS Home

Home > Data

## Data

> Federal Regulations and Data

Federal Reviews and Plans

## Data

Welcome to Georgia's Division of Family & Children Services data page. This page seeks to be transparent and accountable about the lives of children and families by disseminating Georgia's Child Welfare and Office Family Independence (OFI) data.

## DHS Data



# Foster Care: State or County



dhs.georgia.gov/division-family-children-services-child-welfare



## Child Welfare Data: Foster Care

Can't find what you're looking for?  
Please contact the [Office of Communications](#).

Children assessed to be unsafe in their home are taken into state custody, also known as foster care. Most foster children are reunited with their families, but others are adopted, age out at 18, or experience other outcomes. A young person who turns 18 in custody may choose to remain in state care or exit care until the age of 21.

Data is updated quarterly. The latest quarter reported covers children in custody on **March 31, 2022**

State Fiscal Year (July 1 - June 30)

State Fiscal Year

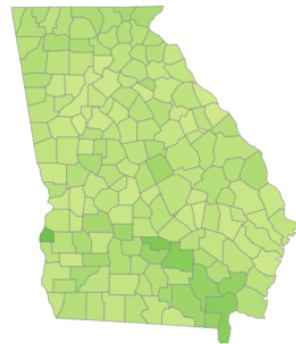
All

County

All

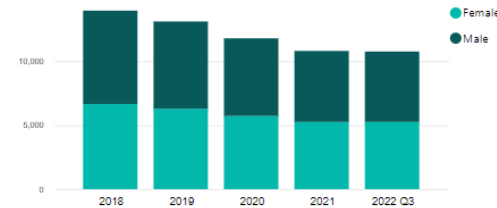
Statewide

### Foster Care Population by County

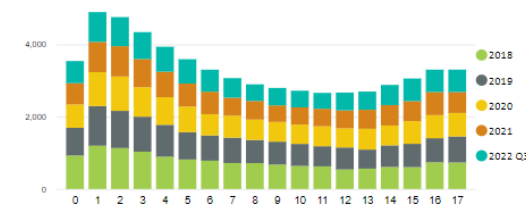


Foster Children per 1,000 in Population  
Based on [U.S. Census](#) 2017 Data  
Lower Higher

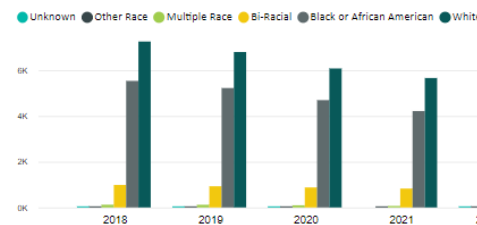
### Children in Foster Care<sup>1</sup> by Sex



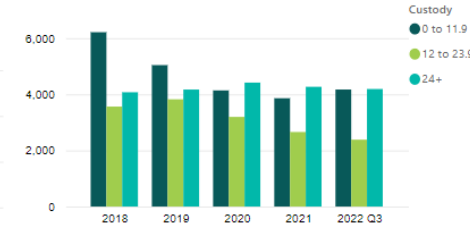
### Children in Foster Care<sup>1</sup> by Age



### Children in Foster Care<sup>1</sup> by Race



### Children in Foster Care<sup>1</sup> Length Of Time (Months)



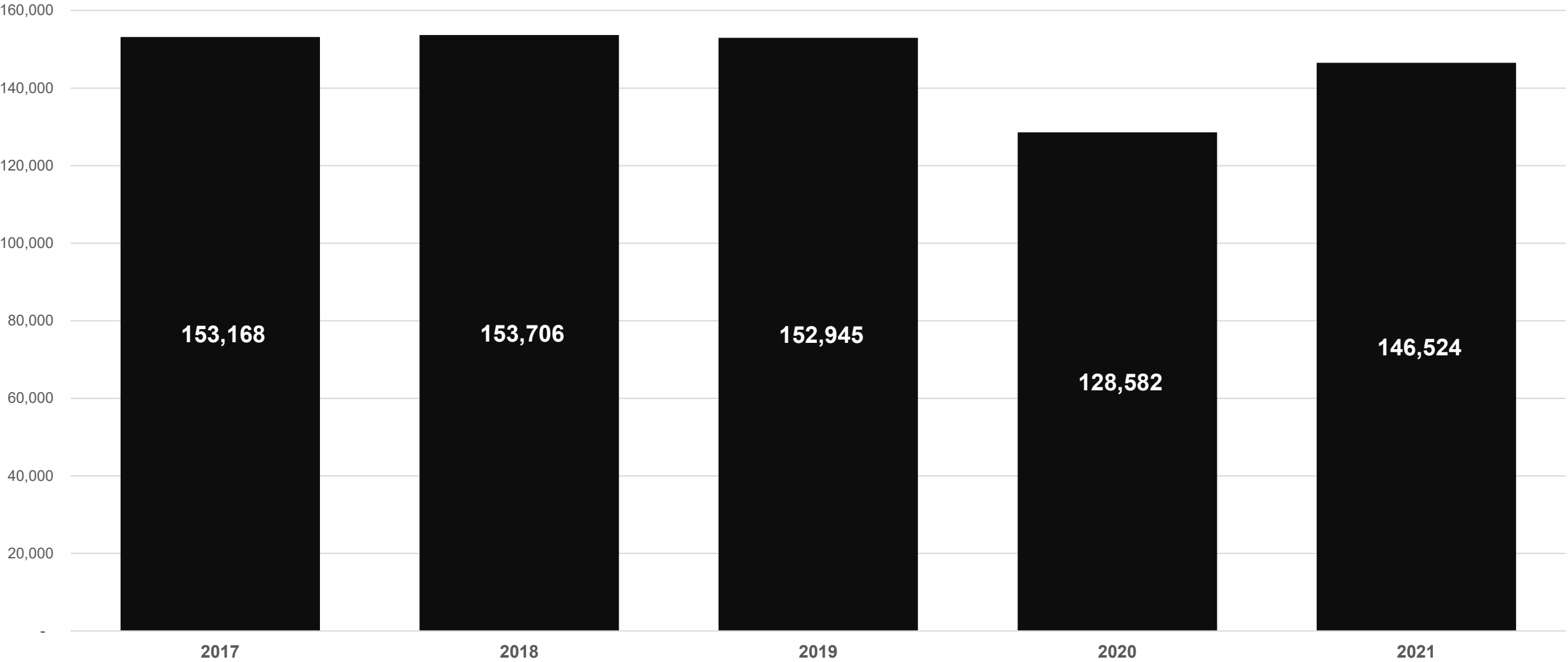
<sup>1</sup>Total number of children in foster care on the last day of the state fiscal year.

Microsoft Power BI

< 4 of 7 >



Intakes Received By Year

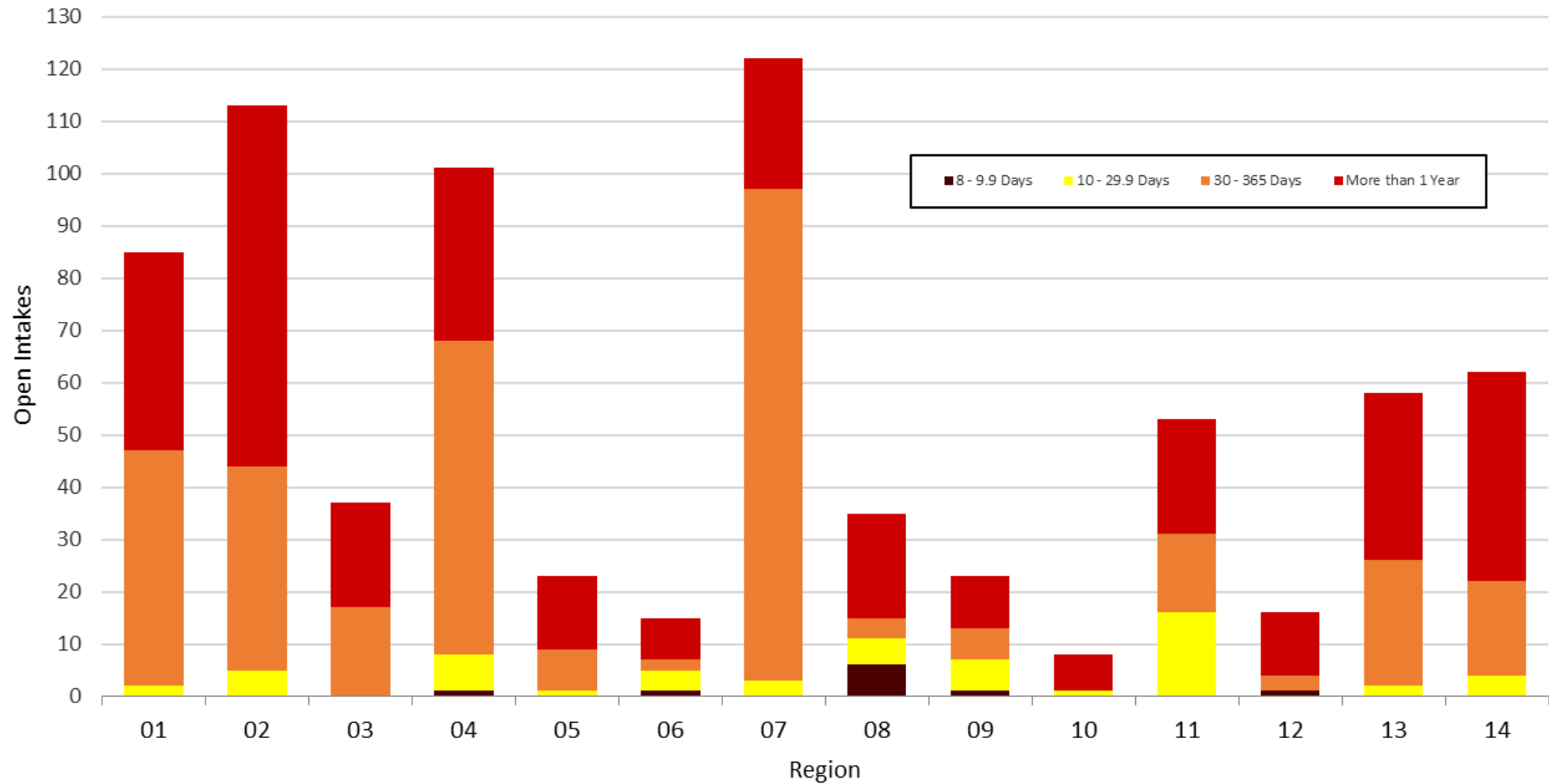


Intakes, or reports of child maltreatment, may be directed to investigation, family support, screened out, or screened out and referred to services. Other intakes, such as Information and Referrals, are not included in these counts. Data Source: Shines.



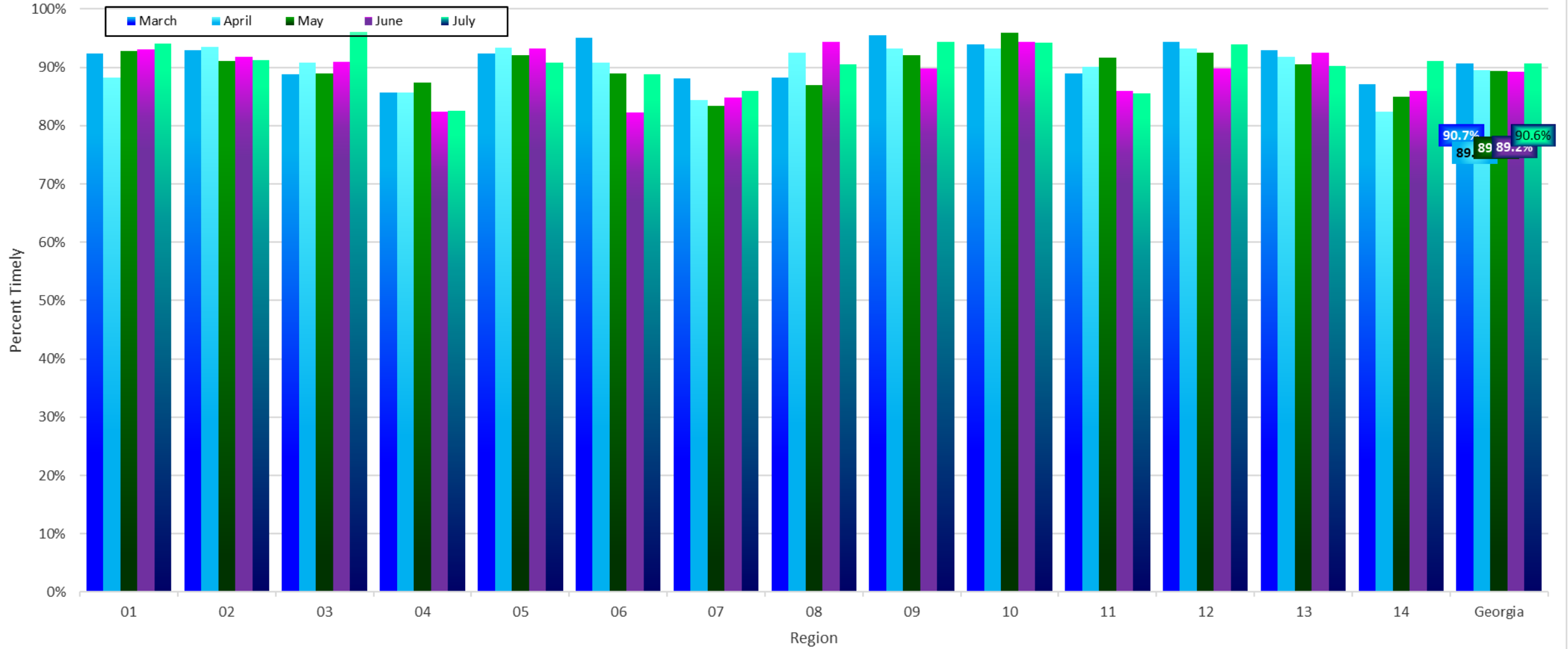
## Intakes Open over 8 Days

August 08, 2022



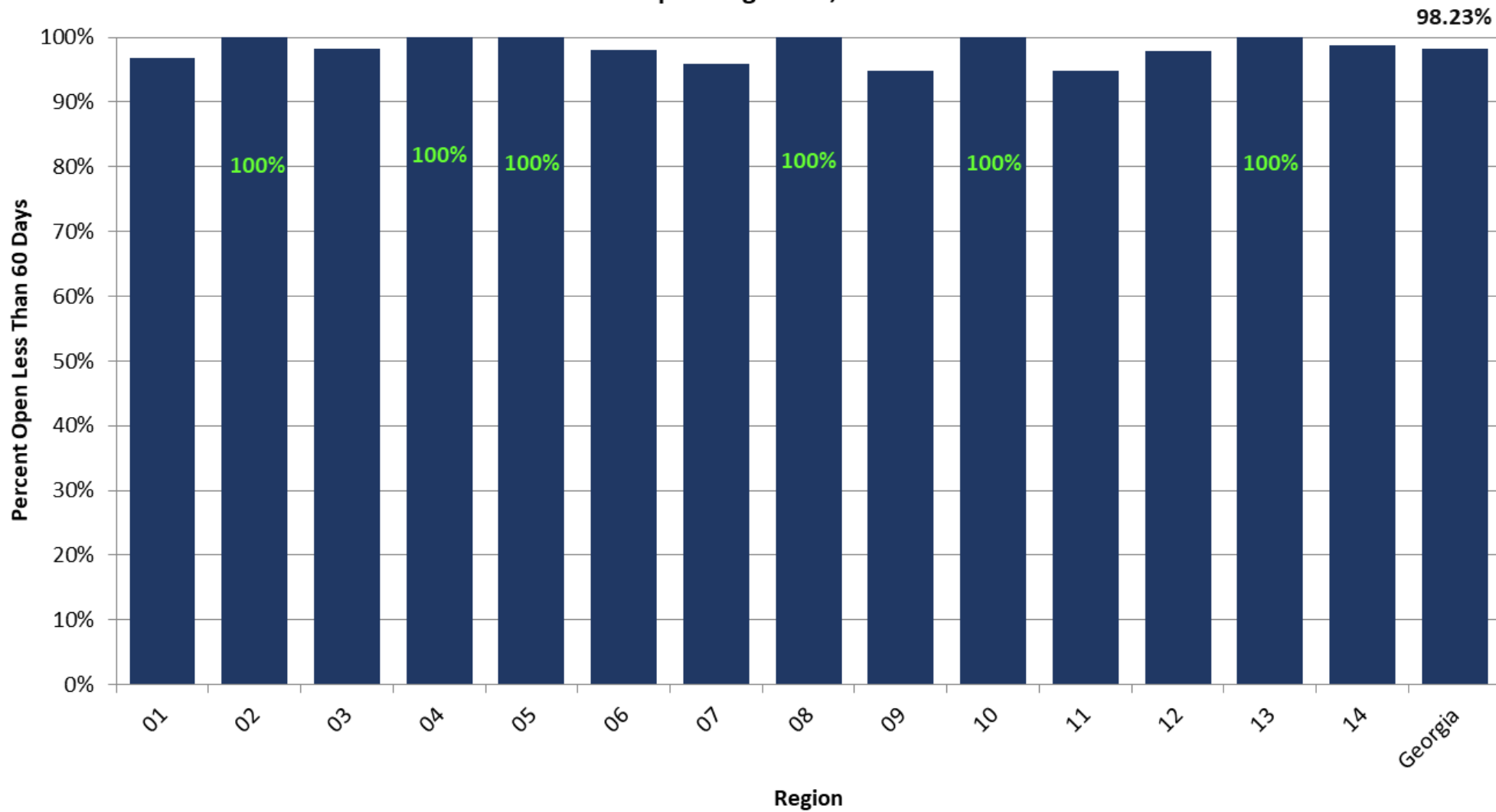
# ISA Response Times

## Intakes Received March 01, 2022 - July 31, 2022



# Family Support Time Open

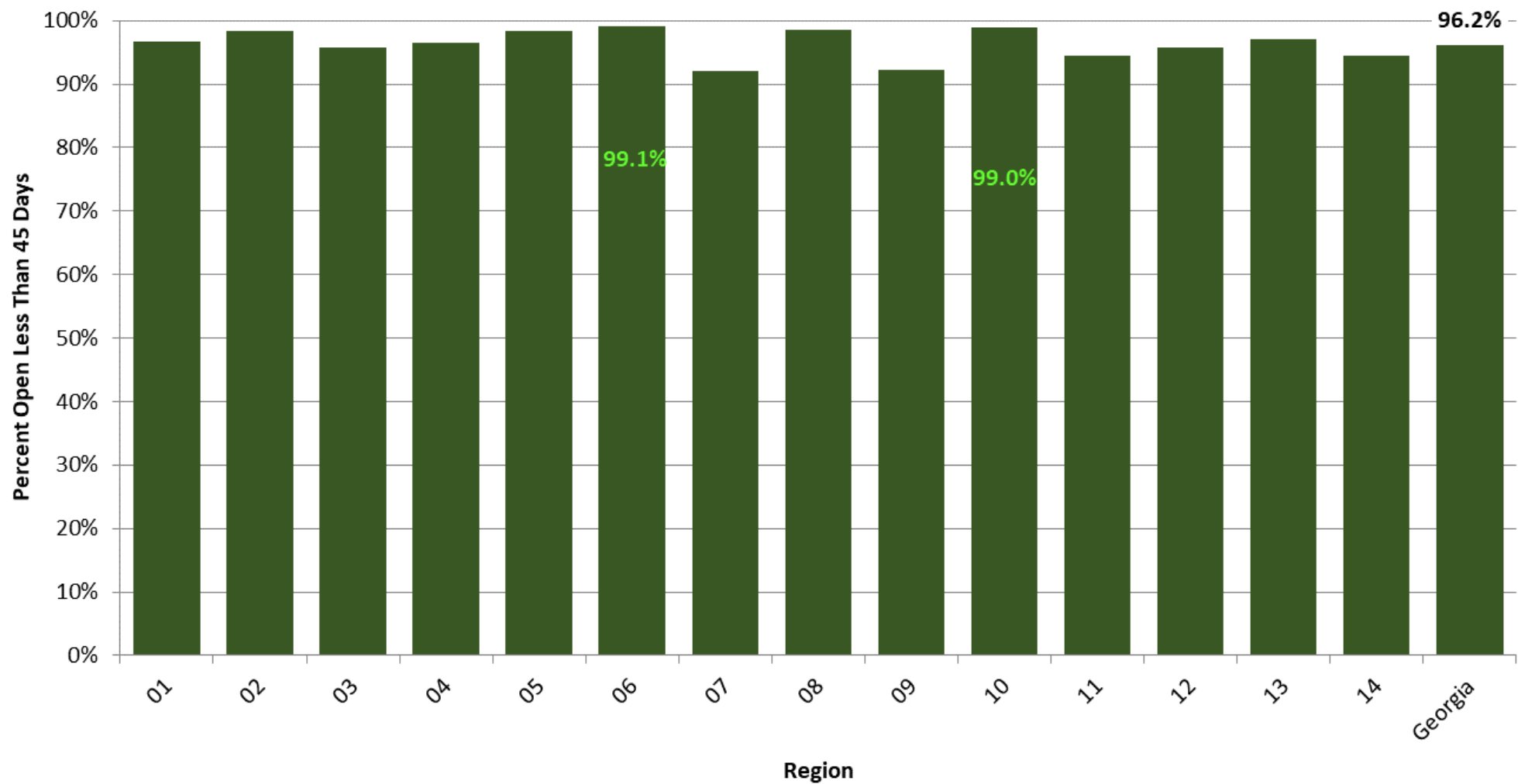
## Cases Open August 08, 2022



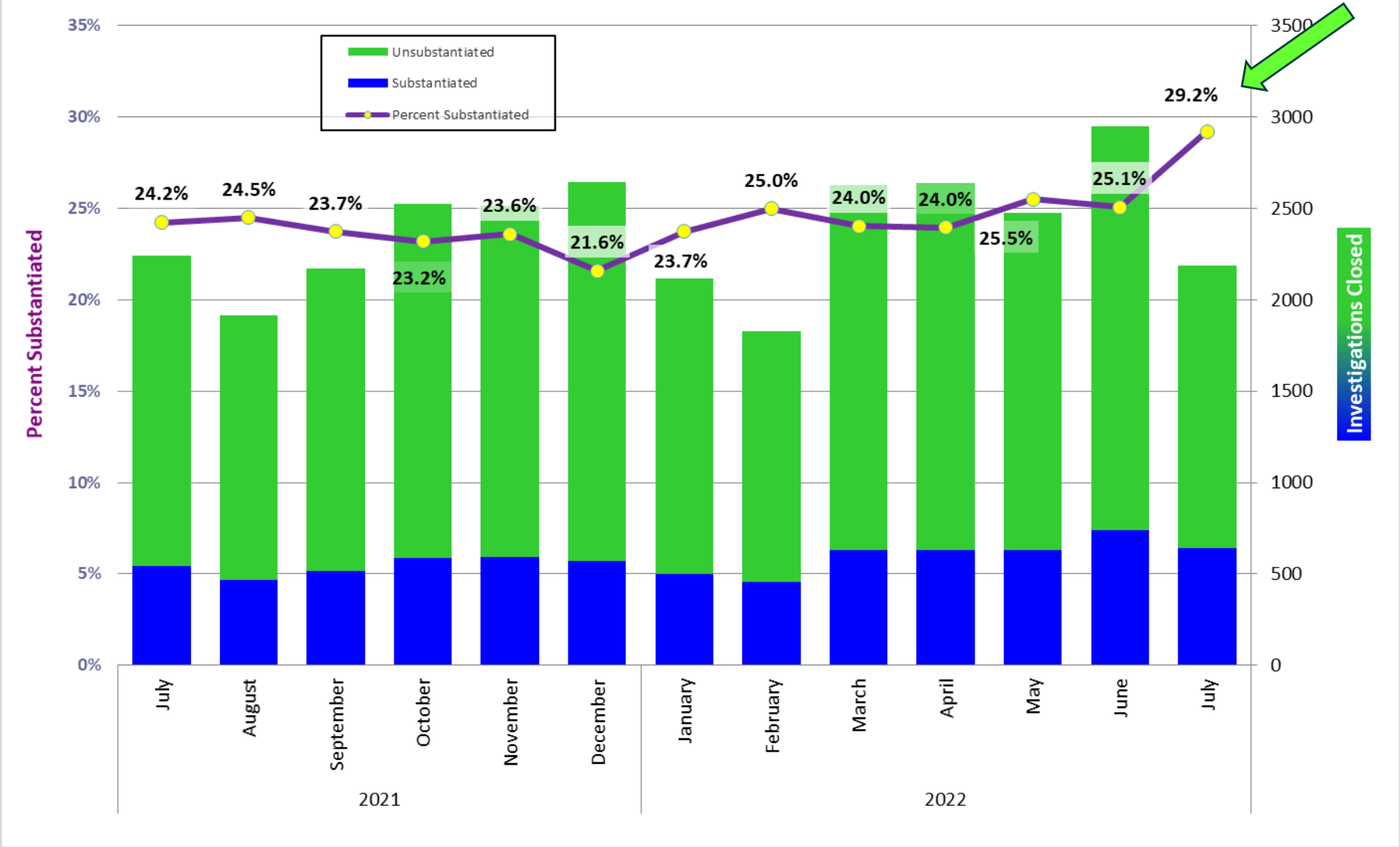


# Investigations Time Open

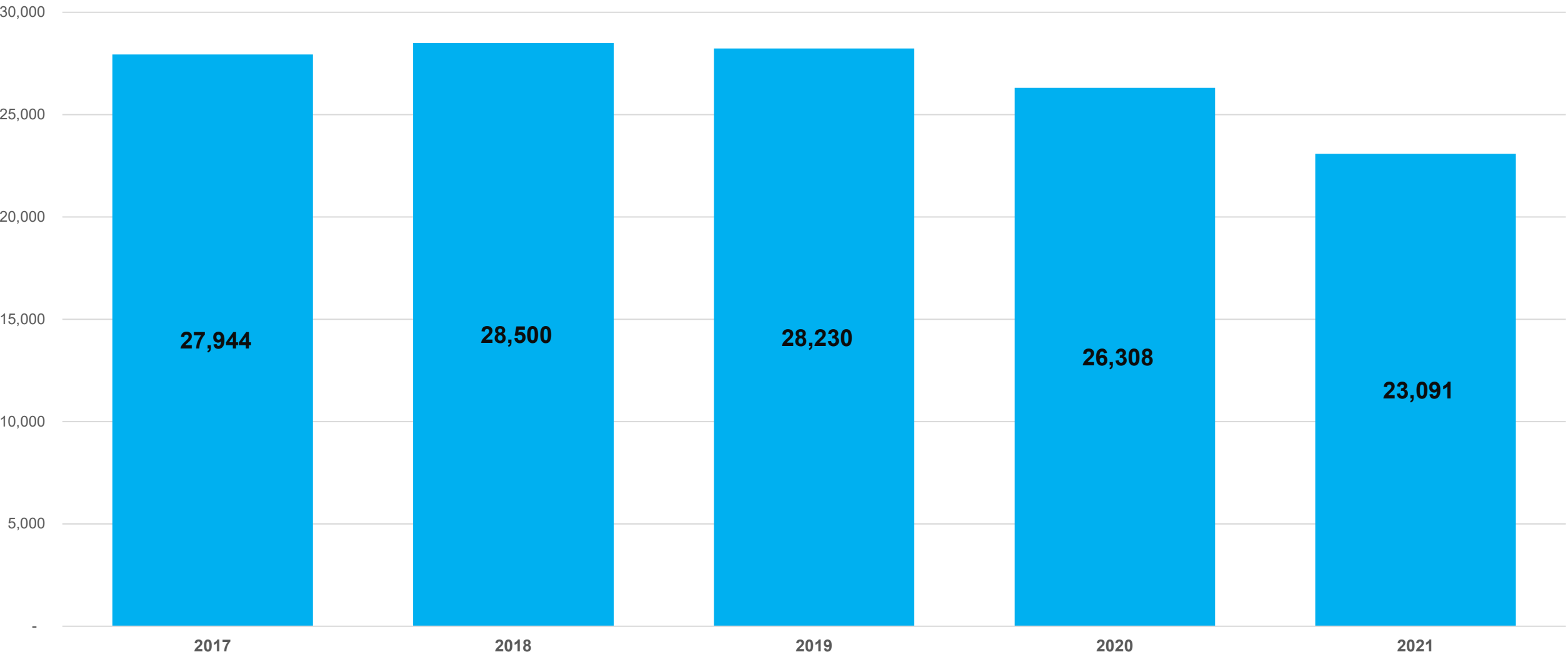
## Cases Open August 08, 2022



Investigations, Percent Substantiated and Total Count



# Family Preservation Stages Open By Year

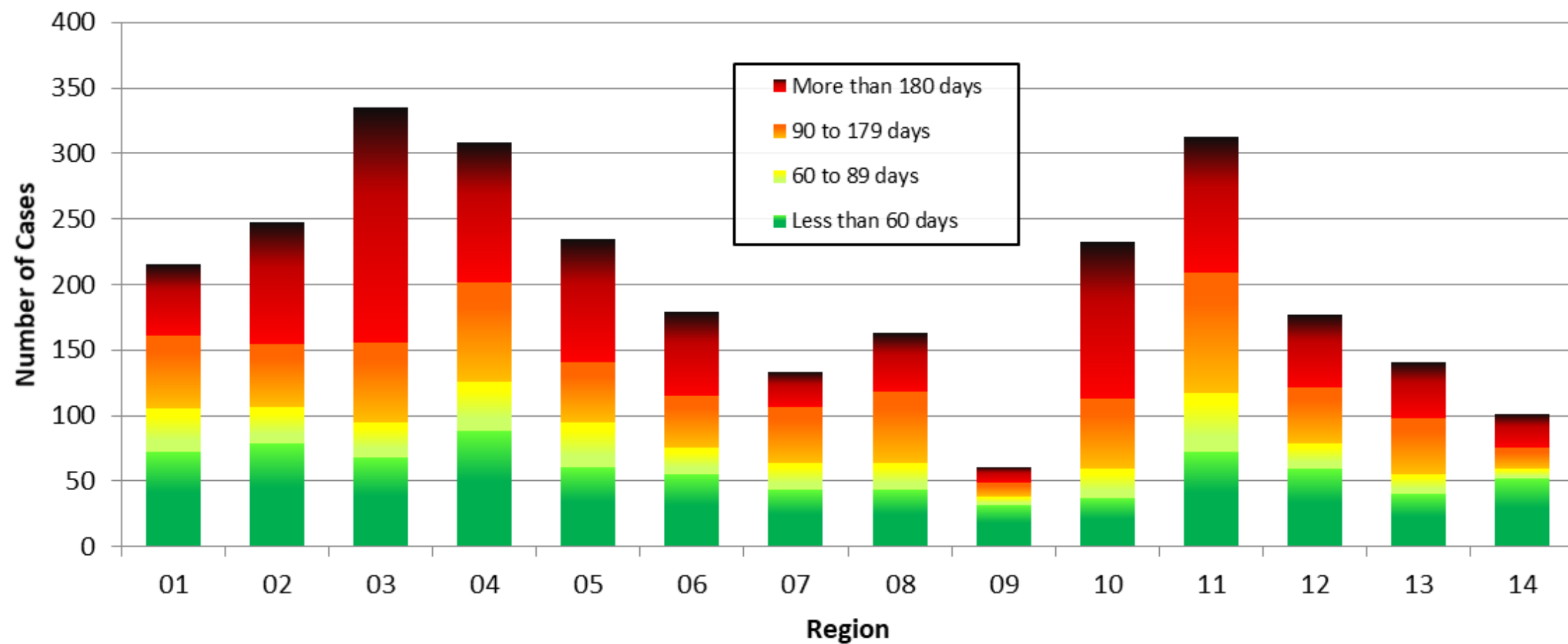


Family Preservation is a program designed to continue working with a family where safety concerns have been identified with the children remaining in the home. Data Source: Shines



## Family Preservation Time Open

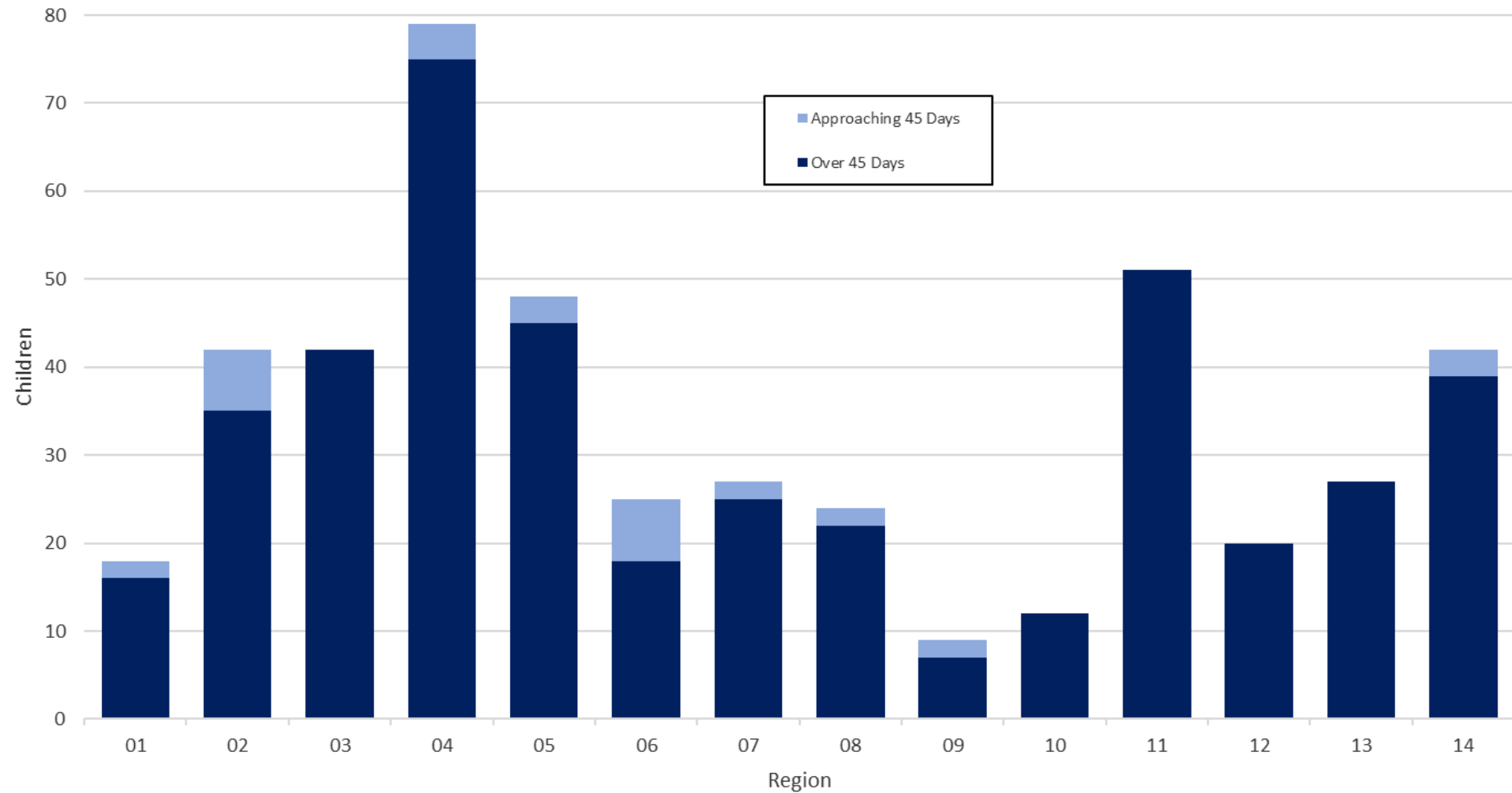
### Cases Open August 08, 2022



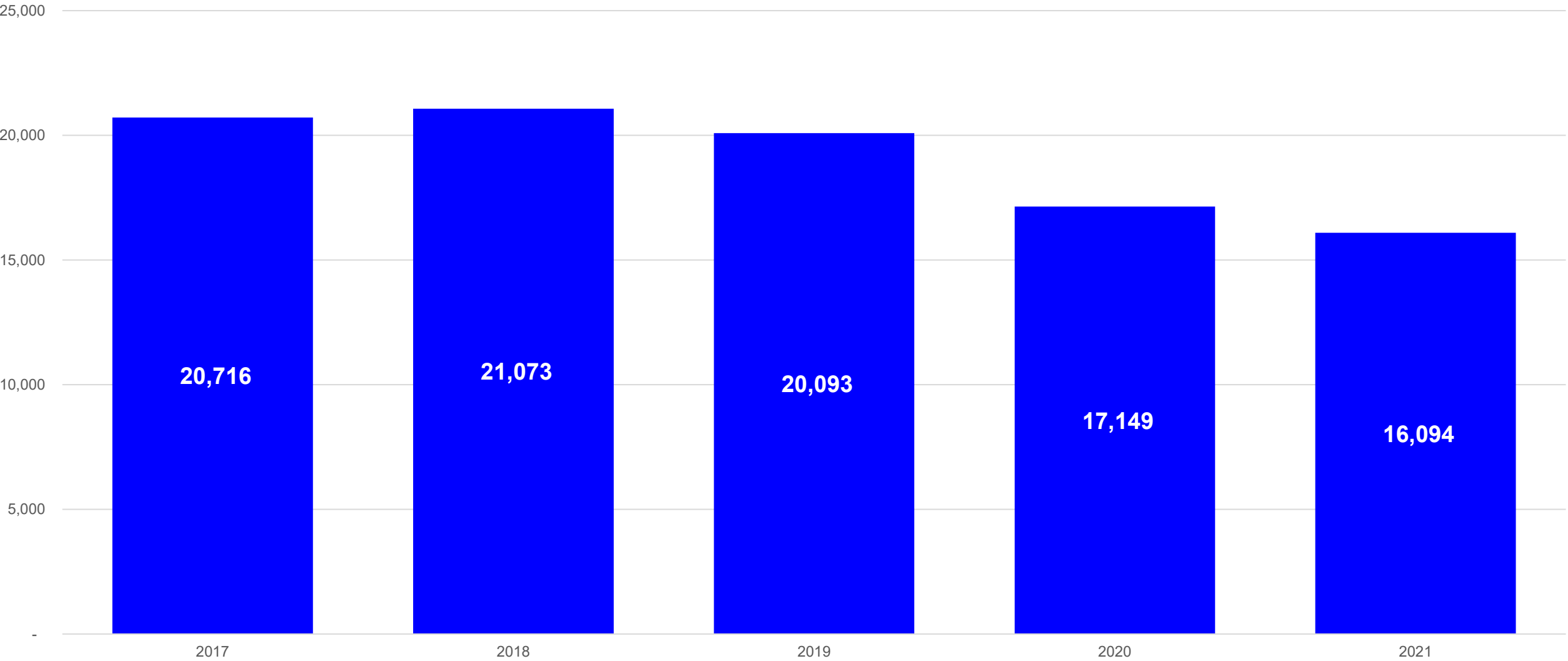
## Safety Resources and Voluntary Kinship Arrangements (Combined)

Approaching or Over 45 Days

August 08, 2022



Children in Custody By Year

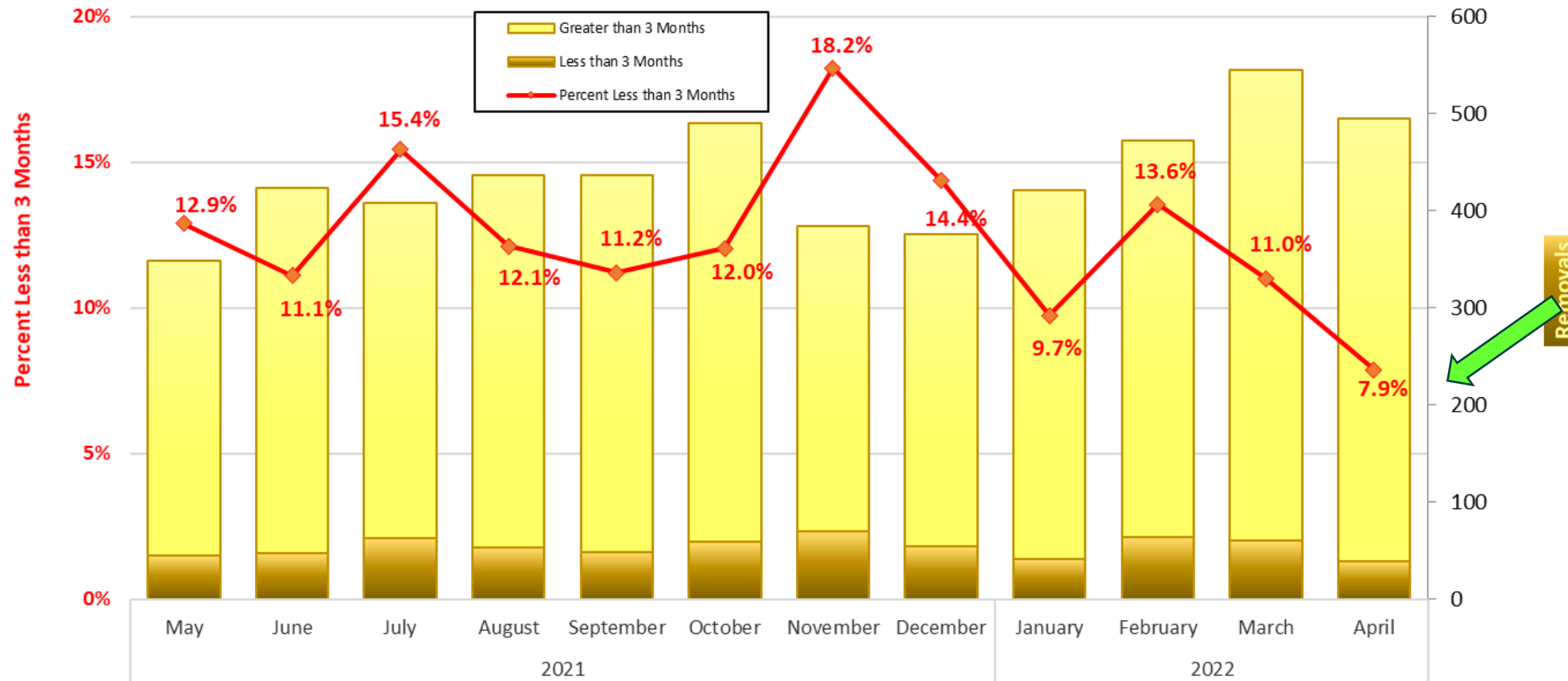


Children may have been in foster care for only part of the year. Each child is counted only once in a year, regardless of the number of foster episodes. Individual children may be counted in more than one year. Data Source: Shines

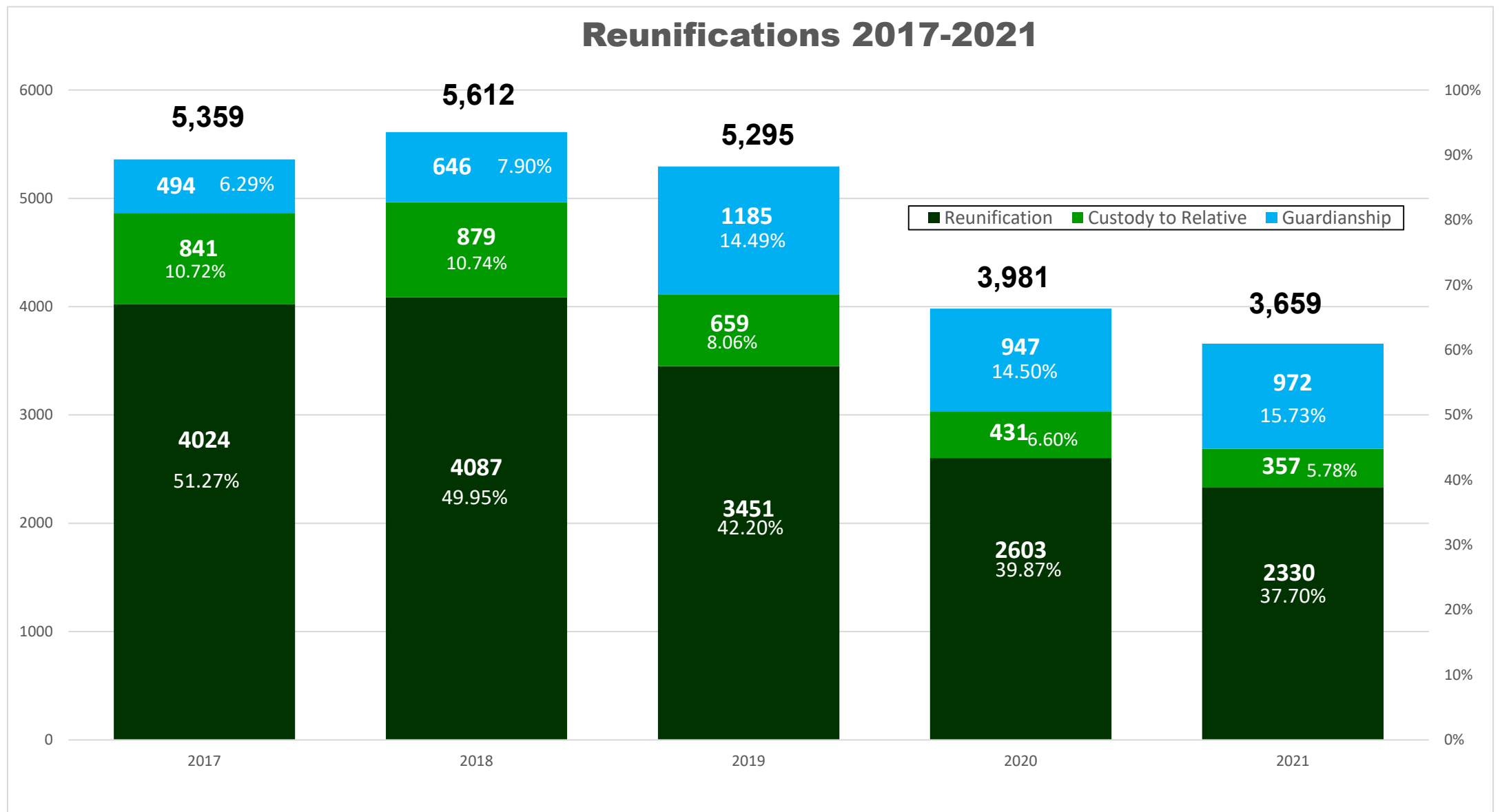


## Georgia Foster Episodes Less than 3 Months, by Removal Month

Removals: 2021 May - 2022 April



Down from  
10.5%  
(data for  
2021 April  
– 2022  
March)

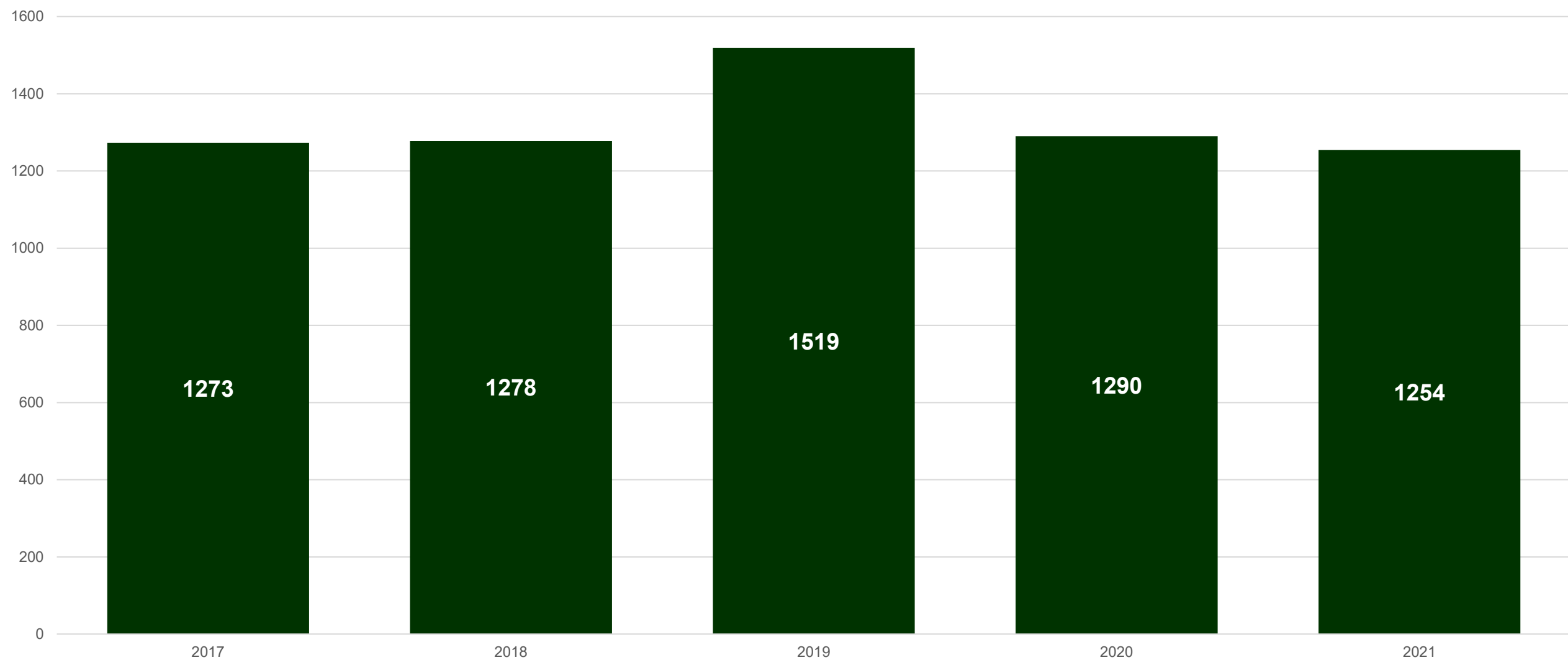


This chart shows the counts and percentages of reunifications that have occurred each of the past five years. By policy, a reunification is, “The return of a child in the temporary custody of DFCS to the legal and physical custody of the parent, guardian or legal custodian. Custody to a non-custodial parent is also deemed reunification.”  
Data Source: Shines





## Adoptions by Year



Finding a forever family for each child is the goal of DFCS when it is clear that reunification will not be in the best interest of the child. These adoption counts show the continuous effort undertaken to help foster children achieve this goal. Data Source: Shines



# Placement Support

---

- Youth with complex needs
  - Enhanced rates to providers
  - Emergency funds to support youth to prevent or end a hoteling episode
  - Temporary staffing to congregate care providers
  - Encouraging proposals from providers
- Family-based caregivers
  - Researching expanded respite



# Decrease Hoteling

- Complex Care Coordinator position
- Daily tracking spreadsheet
- PASS calls with all districts
- Dashboard



# Increase Family Caregivers

- Foster Parent Recruitment campaign announced in coordination with Gov. Kemp's office



**For Immediate Release**

Tuesday, August 2, 2022

## **Gov. Kemp, First Lady Marty Kemp, and DHS Announce Statewide Campaign to Recruit More Foster Parents**

**Atlanta, GA** – Governor Brian Kemp, First Lady Marty Kemp, and Department of Human Services (DHS) Commissioner Candice Broce today announced a new statewide marketing campaign to help recruit and retain more foster parents for youth in state custody.

"My administration has taken great strides to support foster parents in the critically important mission of caring for Georgia children in need," **said Governor Brian Kemp.** "Our state believes in protecting life at all stages, and we're committed to achieving this goal. We hope this new campaign reaches more who are ready to answer this call."



# Streamlining Efforts

---

- Focus on removing administrative burdens on county staff
- Listen to feedback from county directors
- Solicit ideas from frontline staff
- Examples:
  - Temporary suspension of 100-mile rule for transportation
  - Supply of car seats and portable cribs
- Exploring:
  - Prevention of unnecessary weekend work



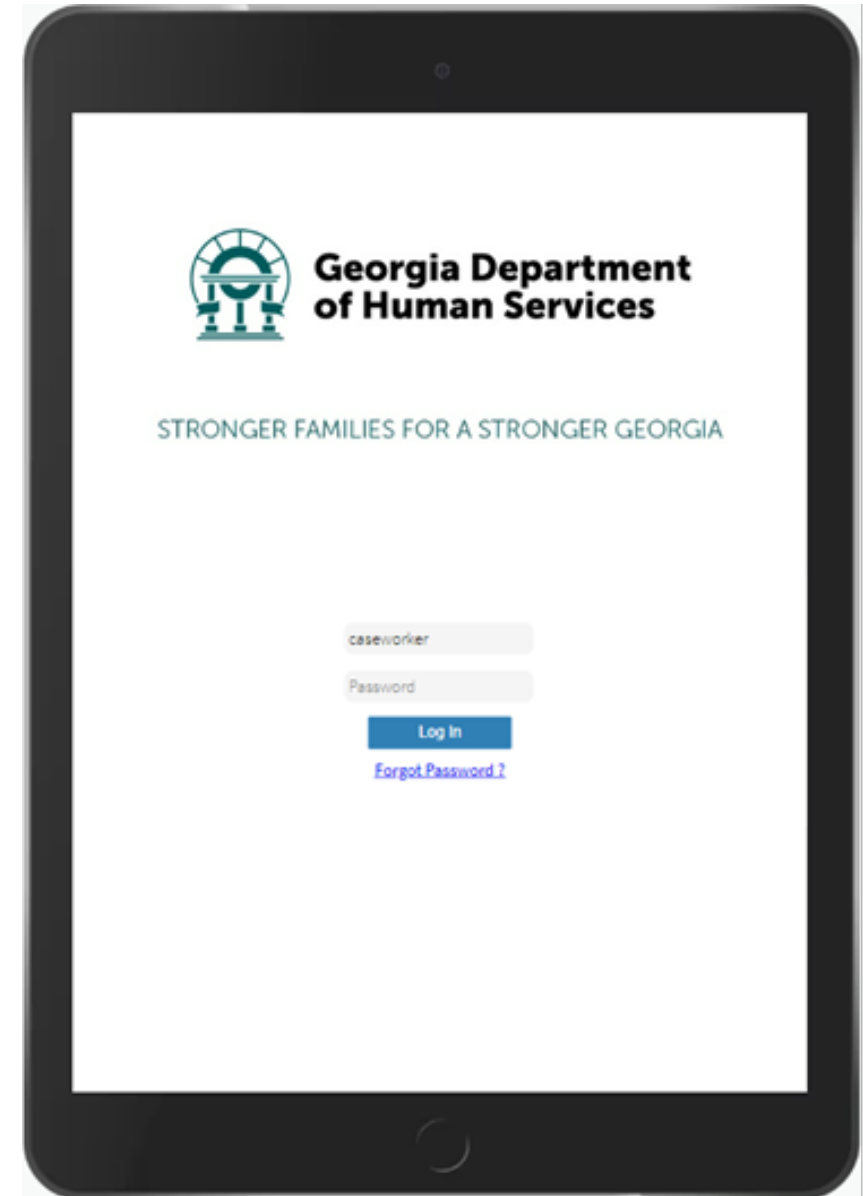
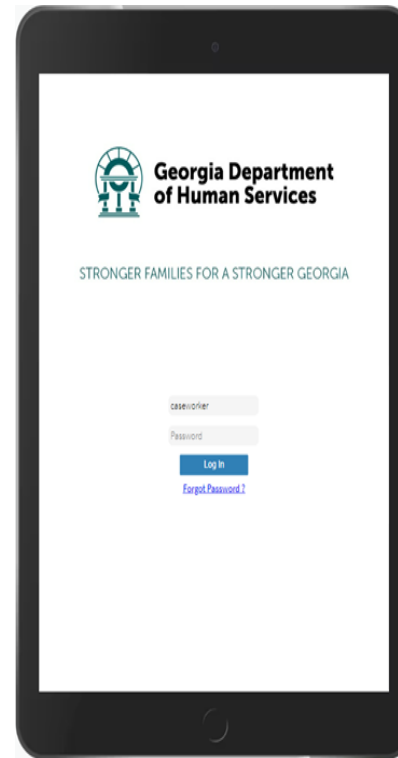
# Technology Modernization

---

- mCase mobile solutions pilot
- Community Portal
- Placement Portal
- *Future portals for CASA, foster parents, prospective foster parents*



# mCase Functionality



# mCase Functions

- View essential case, stage, and person data
- Complete forms:
  - Authorization for Release of Information (English & Spanish)
  - Safety Plan (English & Spanish)
  - Consent for State Criminal Records Check
- Capture and upload photos
- Create contact records





# The scope of Phase 1

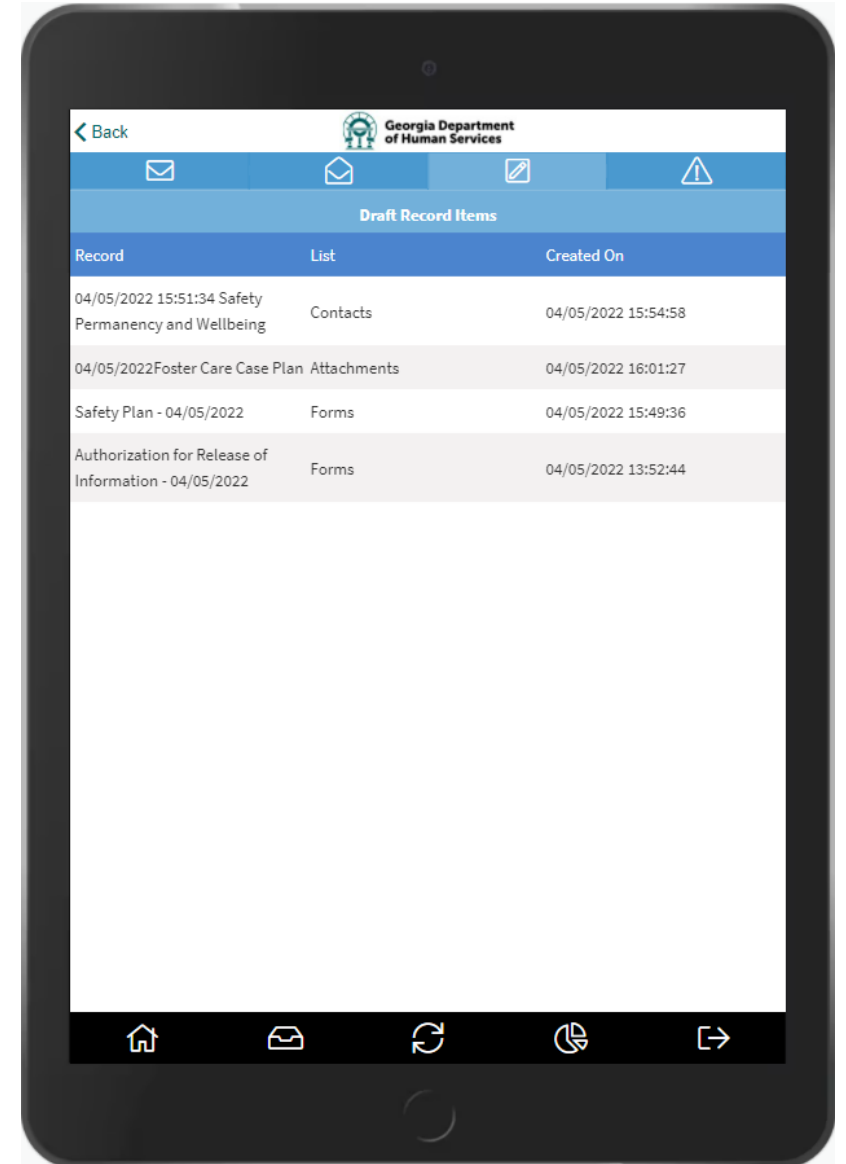
Phase 1 of the GA Mobility solution is limited, both in functionality and the target end-users. Users in the pilot counties (Paulding and Douglas) will be able to view their assigned caseloads and relevant case and person details using the GA Mobility Application on their mobile devices. There will be limited data that will be added or updated using the GA Mobility solution.



# Inbox

There are four different tabs within the user's inbox.

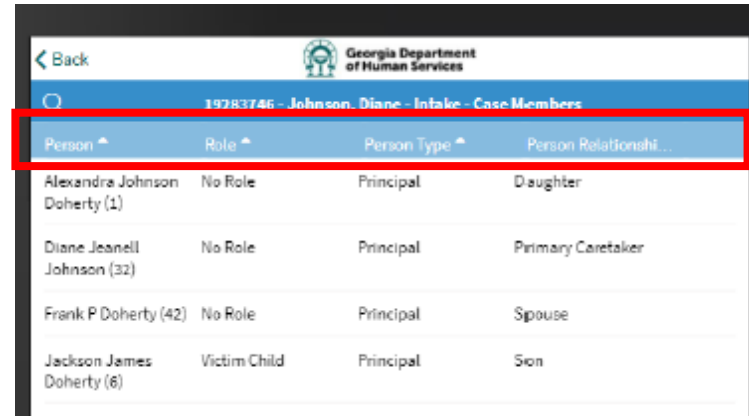
- **New Inbox Items** – displays a list of all unread system notifications
- **Open Inbox Items** – displays a list of all read system notifications
- **Draft Record Items** – displays a list of all records that have been created and are currently in a 'draft' status
- **Error Messages** – displays a list of all error messages



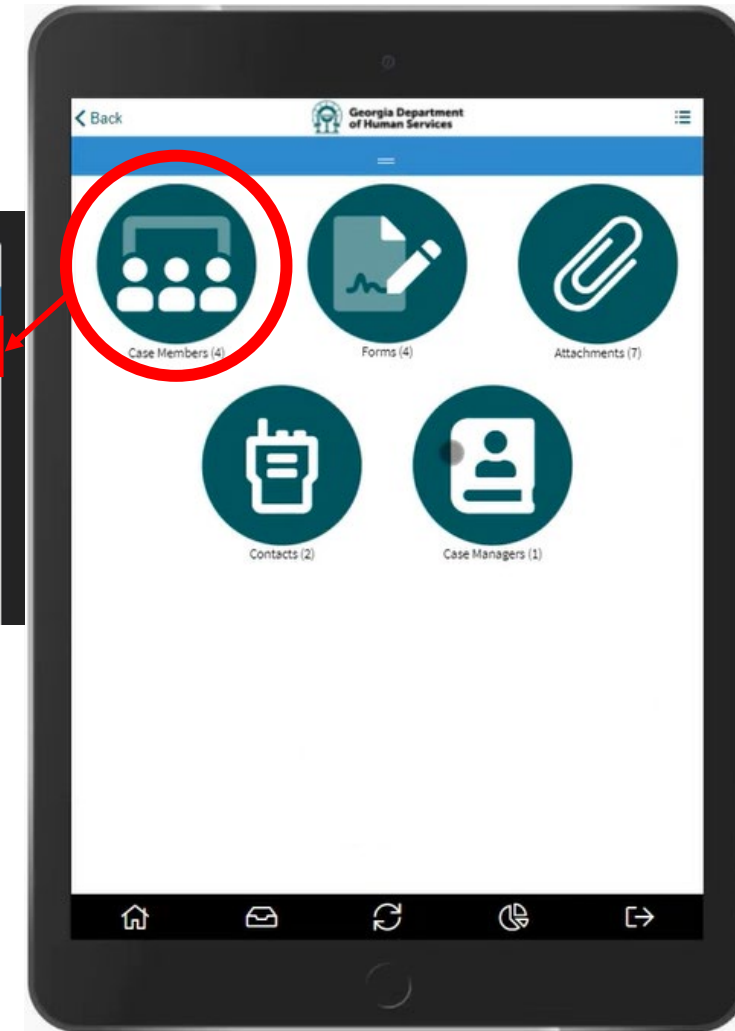
# Case Member

Clicking the Case Member icon lists all members associated with the case and the following columns:

- **Person** – displays the person and their age in parenthesis
- **Role** – any roll associated with the person
- **Person Type** – examples are collateral, principal, which can be listed here
- **Person Relationship to Case** - lists the client relationship to those in the case



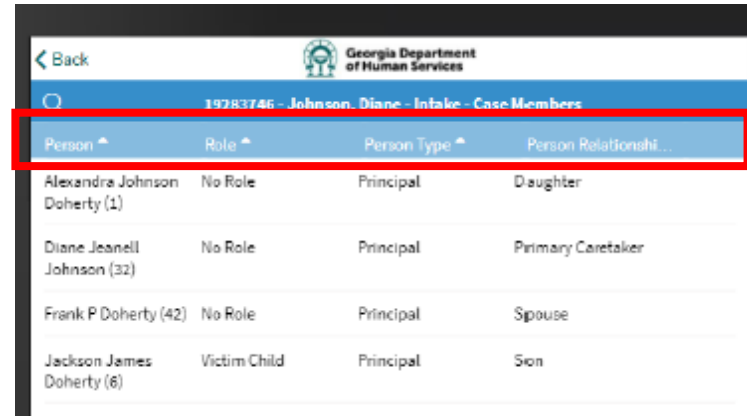
Person	Role	Person Type	Person Relationship
Alexandra Johnson Doherty (1)	No Role	Principal	Daughter
Diane Jeanell Johnson (32)	No Role	Principal	Primary Caretaker
Frank P Doherty (42)	No Role	Principal	Spouse
Jackson James Doherty (6)	Victim Child	Principal	Son



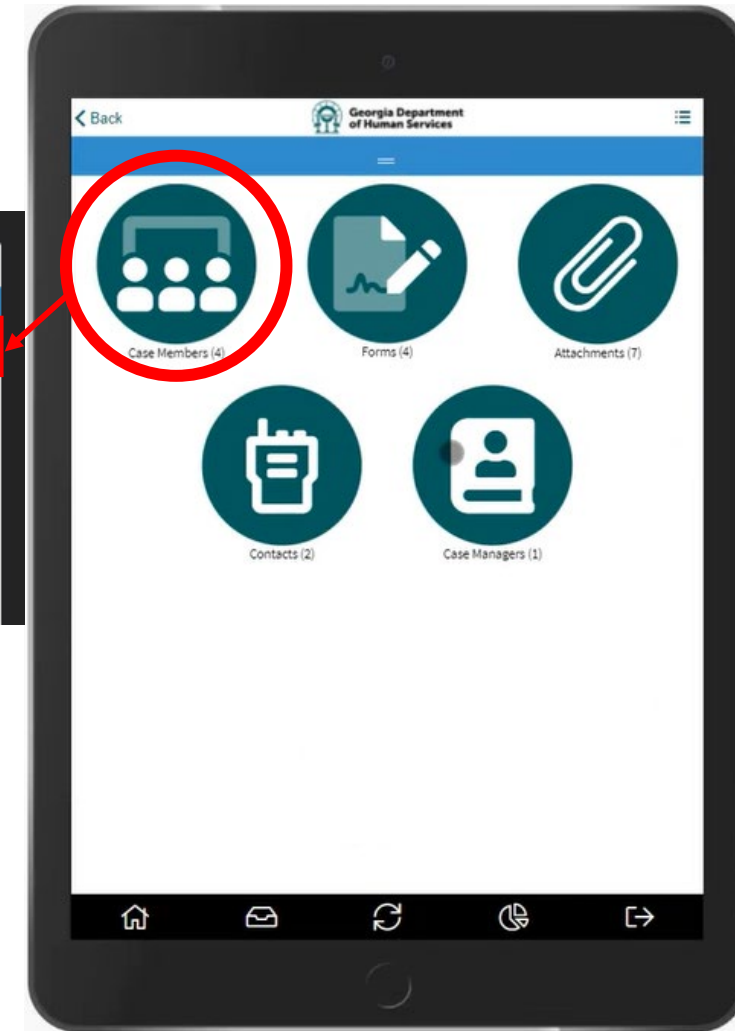
# Forms

Clicking the Forms icon lists all forms associated with the case member and the following appears on the Forms list columns:

- **Form Type** – displays the type of form by name
- **Date** – date the form finalized
- **User** – the user that uploaded the form



Person	Role	Person Type	Person Relationship
Alexandra Johnson Doherty (1)	No Role	Principal	Daughter
Diane Jeanell Johnson (32)	No Role	Principal	Primary Caretaker
Frank P Doherty (42)	No Role	Principal	Spouse
Jackson James Doherty (6)	Victim Child	Principal	Son



# Draft Form

- When selecting the Draft form from the form list, it has "View Embedded Document"
- In order to edit the Draft form to make changes or updates, select the Action Menu to view the options in the top right

The image shows a tablet screen displaying a web-based form titled "Georgia Department of Human Services". The form is titled "AUTHORIZATION FOR RELEASE OF INFORMATION" and is part of the "DIVISION OF FAMILY AND CHILDREN SERVICES". It includes fields for "Name of Individual/Consent/Parent/Agent", "Date of Birth", "IF AVAILABLE", "ID Number used by Requesting Agency", and "ID Number used by Releasing Agency". The form also has sections for "I hereby request and authorize:" and "Release to:", followed by a section for "The following type(s) of information from my records (and specific portions thereof):" and "for the purpose of:". There is a section for "I understand that the Federal Privacy Rule (\"HIPAA\") does not protect the privacy of information if re-disclosed, and therefore request that all information obtained from this person or agency be held strictly confidential and not be further released by the recipient." and a section for "I understand that unless otherwise limited by state or federal regulation, and except to the extent that action has been taken based upon it, I may withdraw this authorization at any time." The form also includes a section for "USE THIS SPACE ONLY IF AUTHORIZATION IS WITHDRAWN" and a section for "I understand that unless otherwise limited by state or federal regulation, and except to the extent that action has been taken based upon it, I may withdraw this authorization at any time." A red square icon in the top right corner of the form indicates the "Action Menu".



# Workforce Support

---

- Career ladder for case managers
- Master's degree pay increase
  - 10% for behavioral health science degrees
- LCSW supplement
- National Child Welfare Workforce Institute (NCWWI) grant
- \$5,000 salary increase and bonus
  - Ability to convert leave to dollars
- Paid down to one hour for comp. time
- Job fairs
- HR positions to expedite hiring



# Legislative Updates

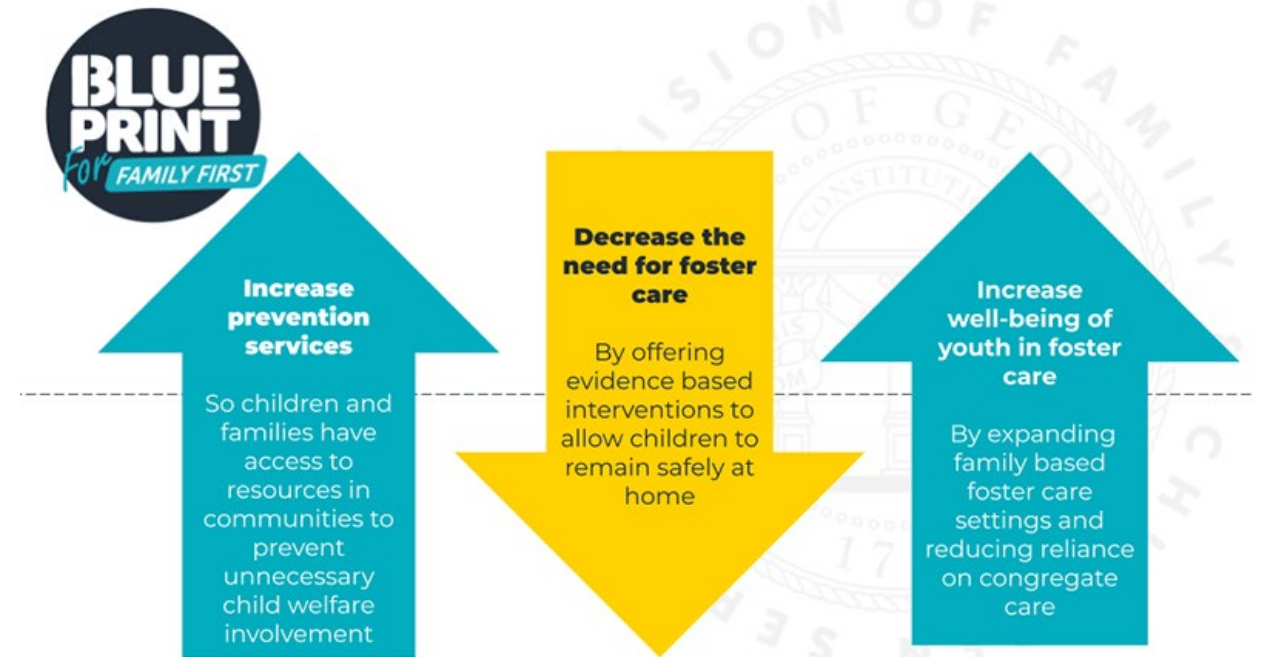
- Autism respite care pilot
- Autism prevalence project
- Provider rate increase
  - 10% all providers
- Clothing allowance increase
- Community Action Teams pilot





# Family First Update

- Family First Prevention Services Act
- RFP for services released
- [www.blueprintfamilyfirst.org](http://www.blueprintfamilyfirst.org)





# Questions?

Mary Havick

[mary.havick@dhs.ga.gov](mailto:mary.havick@dhs.ga.gov)

