

Family Independence

Outcome Measures & Results

May 2013

(Reflects data as of March 31, 2013)



**Data Analysis, Accountability,
Research & Evaluation**

Definitions and Data Sources

Pages

TANF Cases (Total/Adult/Child Only)

1 - 2

Includes all cases active at some time during the month

Source: Success

Food Stamp Cases

3

Includes all cases active at some time during the month

Source: SUCCESS DMD6929I

Medicaid Cases

3

Includes case active at the end of the month

Source: SUCCESS DMF8031I

TANF Work Participation Rate

4

Of all the families with a Temporary Assistance to Needy Families (TANF) work requirement, the percentage of families that met the work requirement. **State Target: greater than or equal to 70%**

Food Stamp Participation Rate

4

The ratio of number of food stamp persons over the estimated persons at or below 125% of the poverty level. **State Target: greater than or equal to 59.65%**

Source: SUCCESS DMD6929I, US Census Bureau

Medicaid (ABD) Standard of Promptness

5

Of all the Aged, Blind, Disabled Medicaid applications for benefits, the percentage that was completed within the mandated Standard of Promptness (SOP). **State Target: greater than or equal to 96.0%**

Source: SUCCESS DMF8001I, DMF8007I, DMF8031I, DMF8032I, DMF8061I

Medicaid (Family) Standard of Promptness

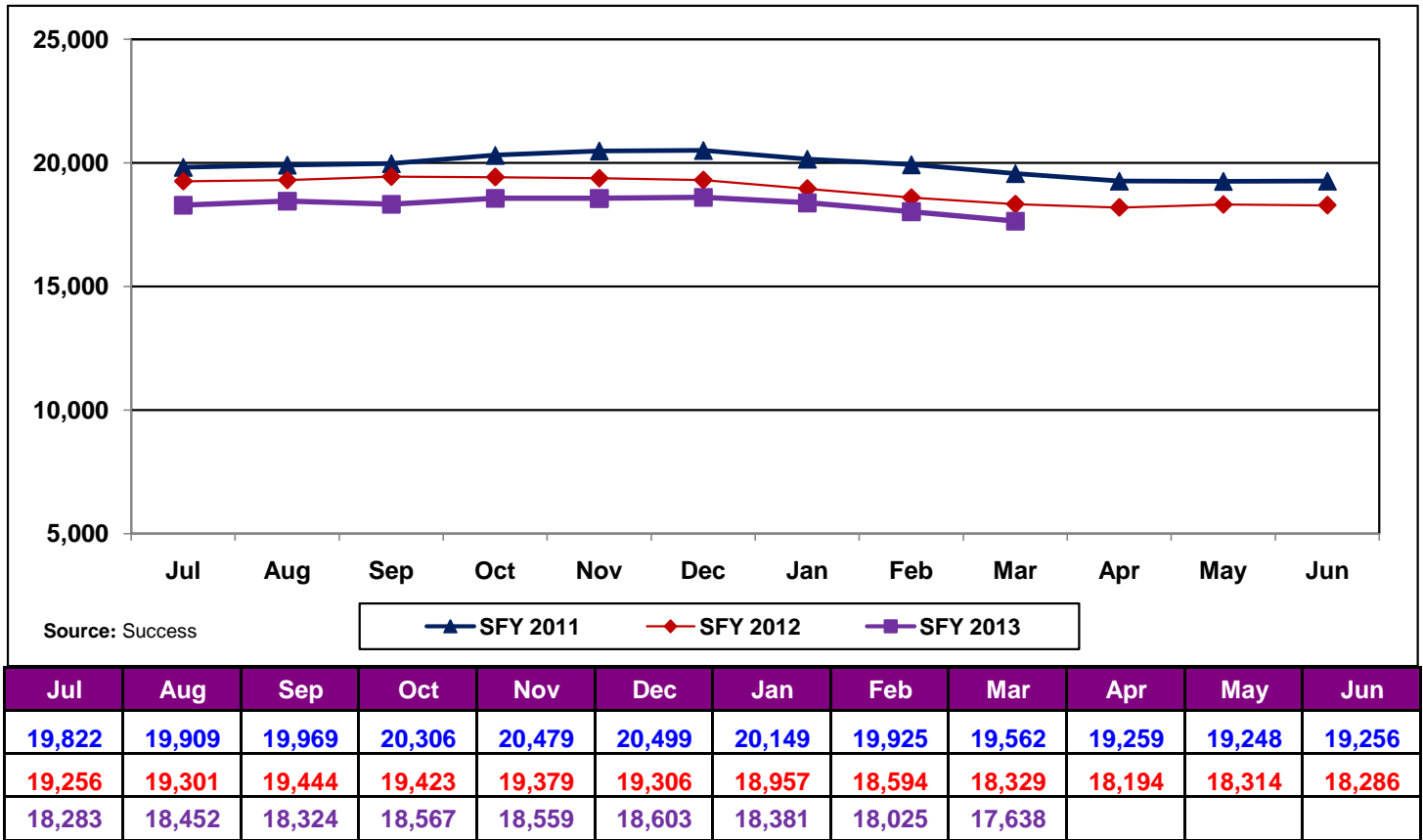
5

Of all the Family Medicaid applications for benefits, the percentage that was completed within the mandated Standard of Promptness (SOP). **State Target: greater than or equal to 96.0%**

Source: SUCCESS DMF8001I, DMF8007I, DMF8031I, DMF8032I, DMF8061I

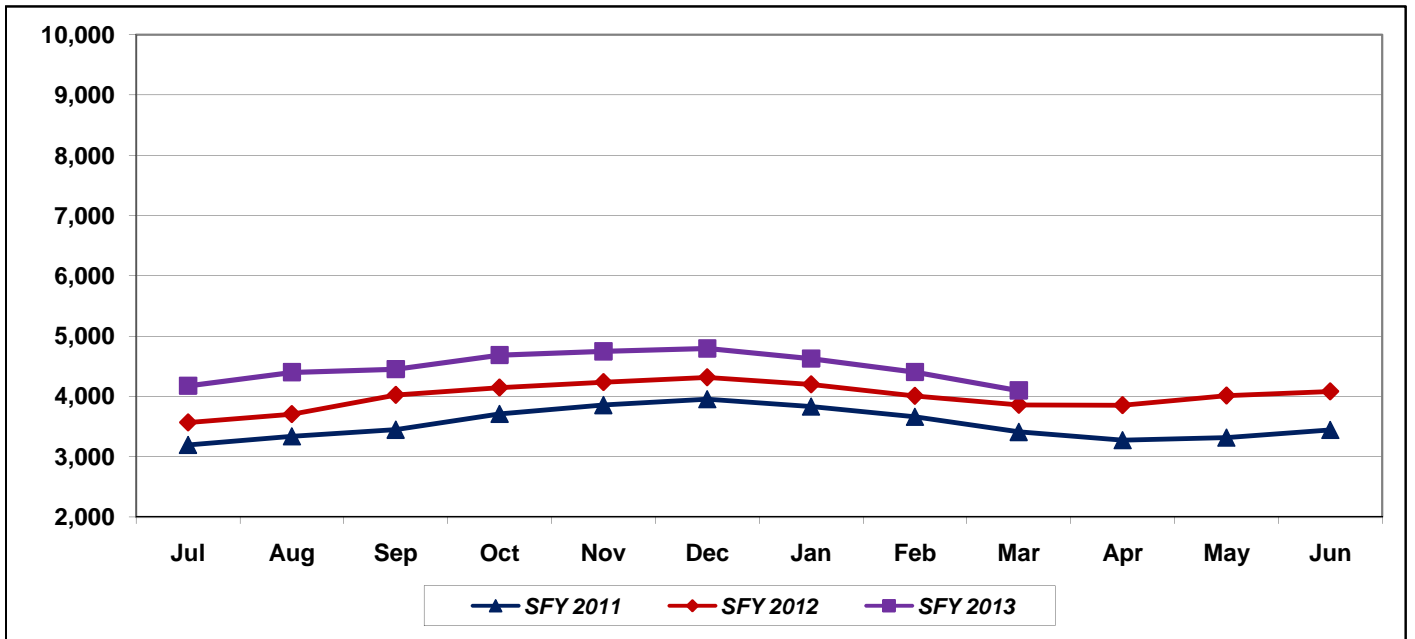
TANF Cases

Def: Includes all cases active at some time during the month



TANF Cases - Adult

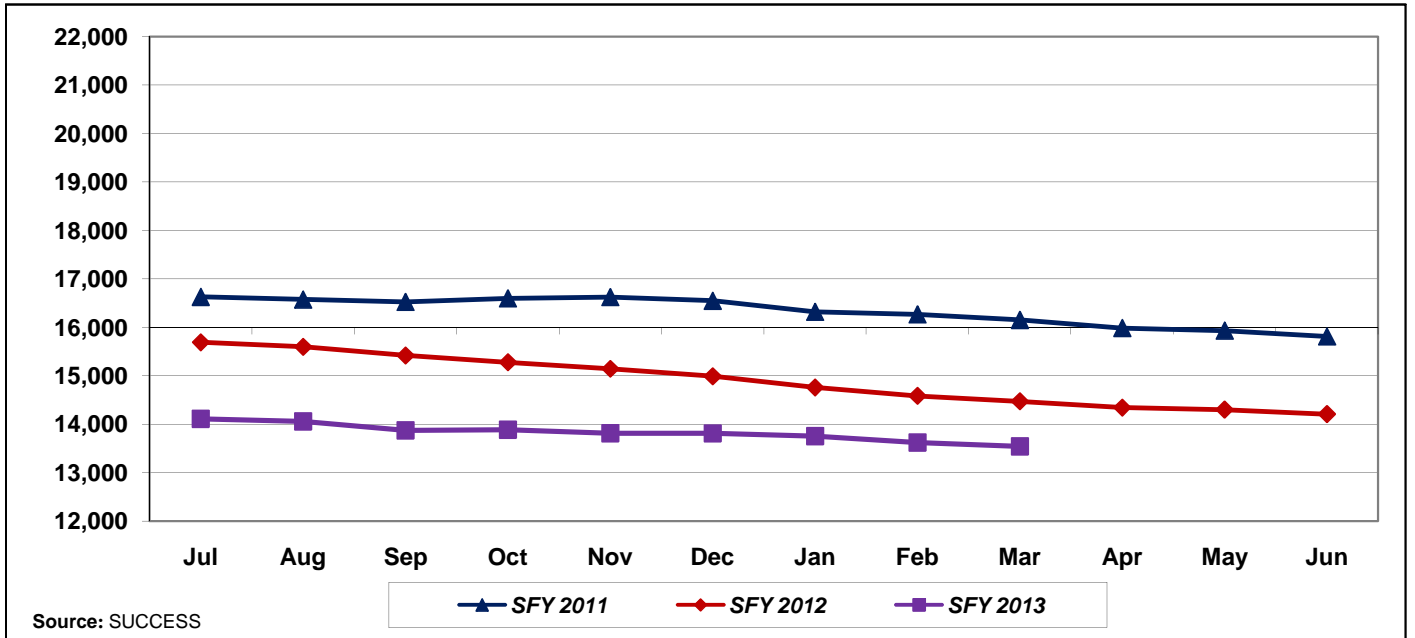
Def: Adult is defined as a work eligible individual. Includes all cases active at some time during the month.



Jul	Aug	Sep	Oct	Nov	Dec	Jan	Feb	Mar	Apr	May	Jun
3,194	3,336	3,446	3,709	3,855	3,951	3,829	3,659	3,409	3,273	3,314	3,442
3,563	3,702	4,023	4,143	4,234	4,315	4,197	4,008	3,856	3,851	4,013	4,079
4,173	4,397	4,449	4,683	4,744	4,792	4,624	4,401	4,094			

TANF Cases - Child Only

Def: There is no work eligible adult in the case. Includes all cases active at some time during the month.

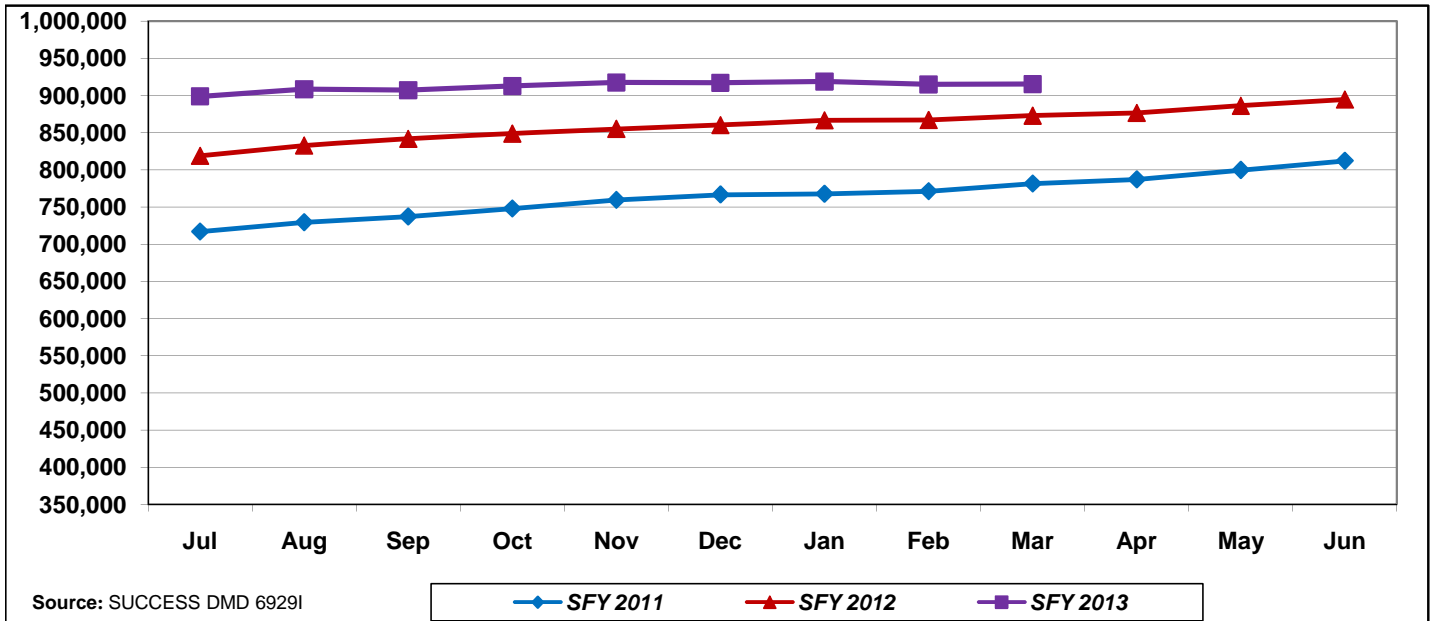


Source: SUCCESS

Jul	Aug	Sep	Oct	Nov	Dec	Jan	Feb	Mar	Apr	May	Jun
16,628	16,573	16,523	16,597	16,624	16,548	16,320	16,266	16,153	15,986	15,934	15,814
15,693	15,599	15,421	15,280	15,145	14,991	14,760	14,586	14,473	14,343	14,301	14,207
14,110	14,055	13,875	13,884	13,815	13,811	13,757	13,624	13,544			

Food Stamp Cases

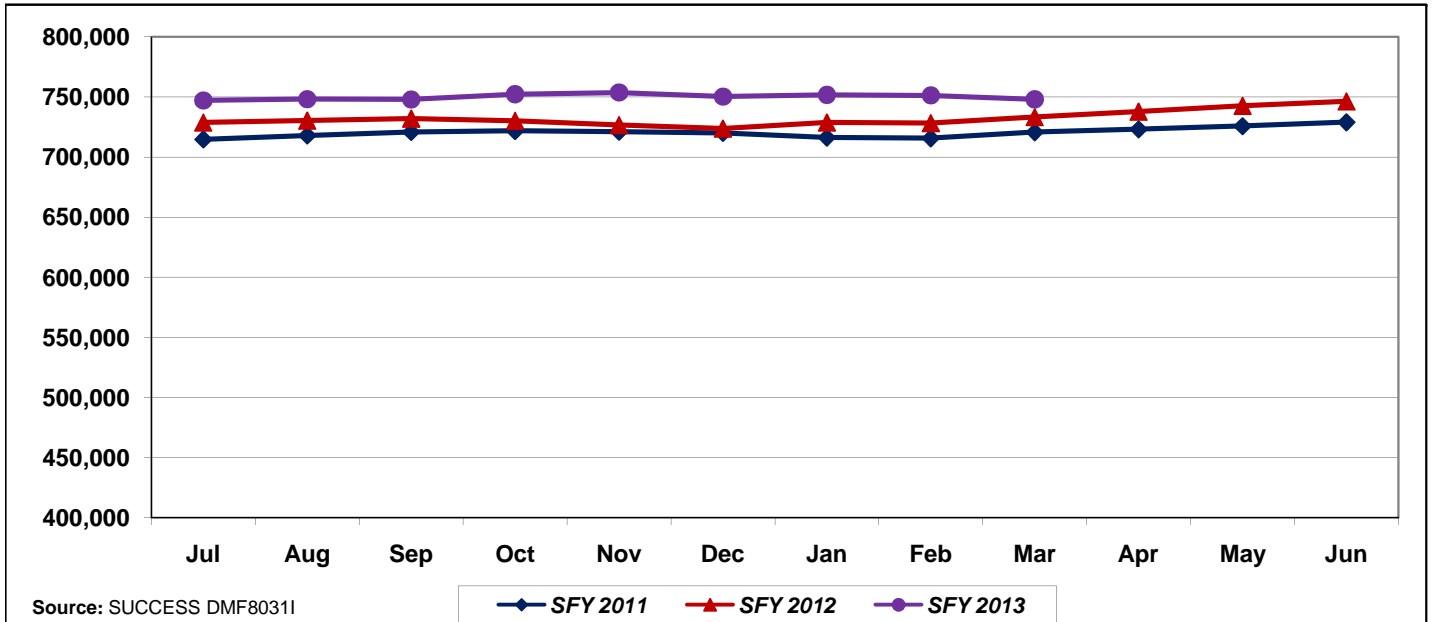
Def: Includes all cases active at some time during the month.



Jul	Aug	Sep	Oct	Nov	Dec	Jan	Feb	Mar	Apr	May	Jun
716,749	729,470	736,976	747,818	759,277	766,565	767,530	771,191	781,487	787,080	799,688	812,078
818,832	832,708	841,708	848,768	855,137	860,041	866,542	866,993	872,924	876,613	886,197	894,554
898,825	908,470	907,170	912,759	917,359	916,944	918,712	914,716	915,353			

Medicaid Cases

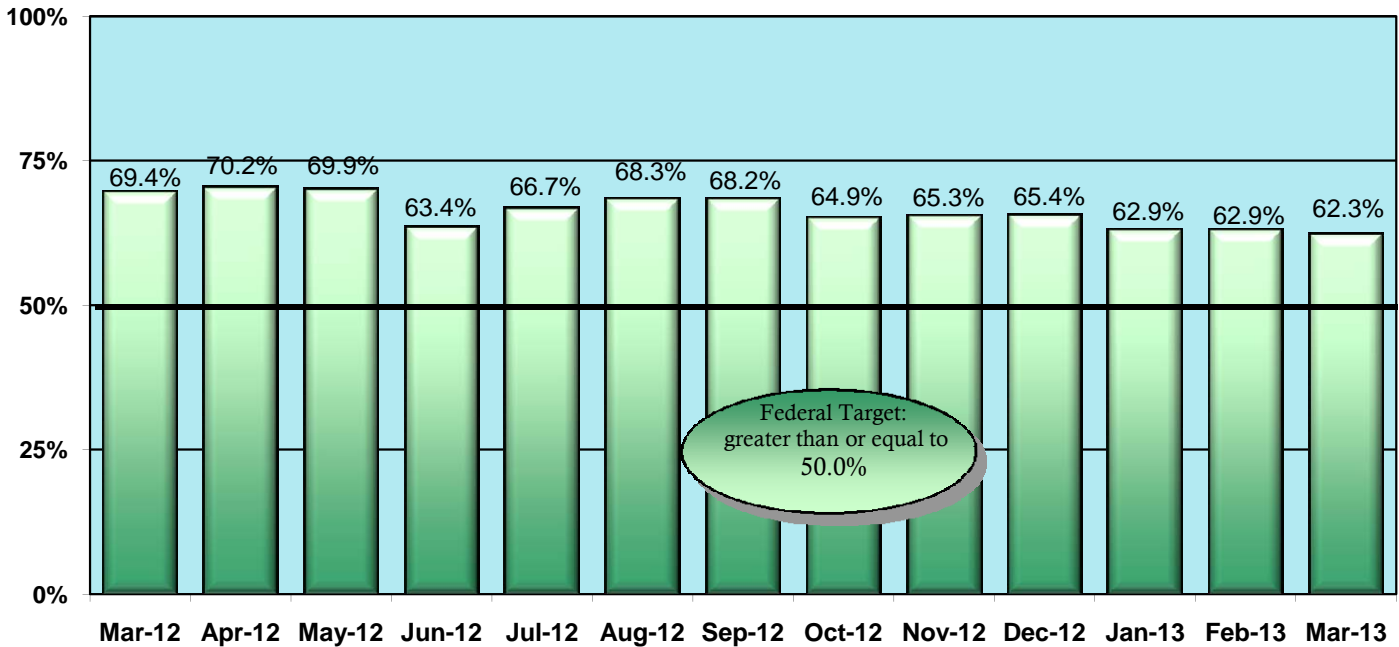
Def: Includes case active at the end of the month.



Jul	Aug	Sep	Oct	Nov	Dec	Jan	Feb	Mar	Apr	May	Jun
714,652	717,946	720,780	721,727	721,006	720,000	716,176	715,649	720,723	723,136	725,743	729,014
728,818	730,411	732,108	730,300	726,821	723,826	728,842	728,379	733,291	737,826	742,618	746,335
747,084	748,088	747,833	752,253	753,613	750,240	751,630	751,236	747,918			

TANF Work Participation Rate

Def: Of all the families with a TANF work requirement, the percentage of families that met the work requirement.



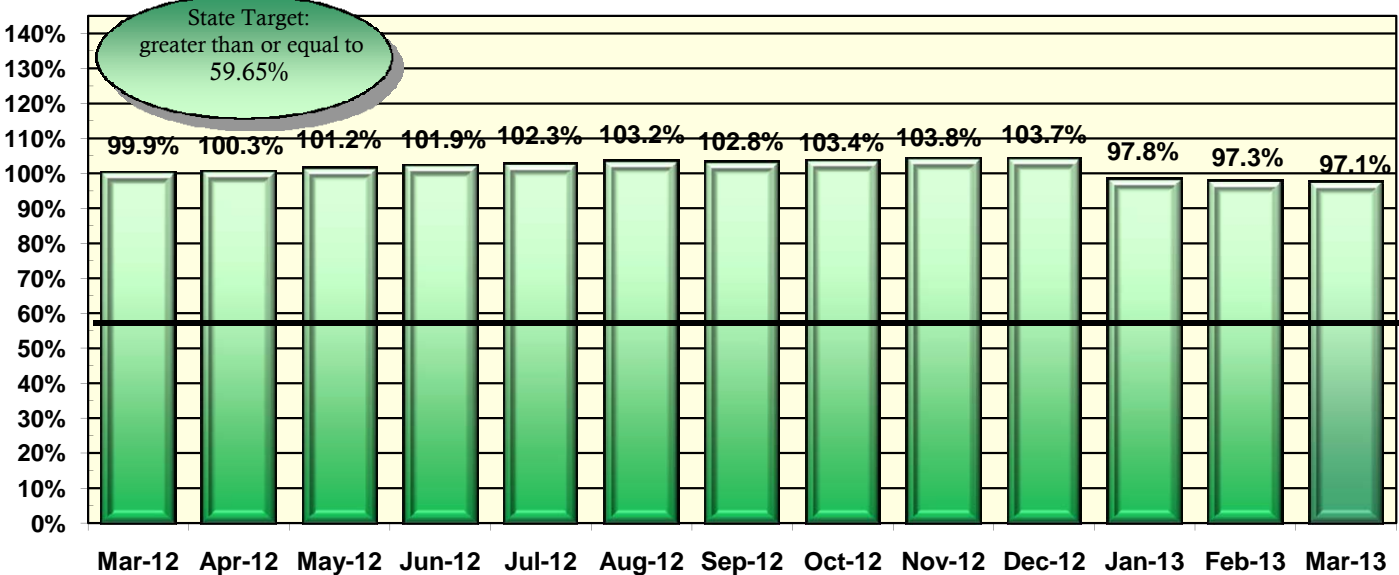
Source: SUCCESS

Mar-12	Apr-12	May-12	Jun-12	Jul-12	Aug-12	Sep-12	Oct-12	Nov-12	Dec-12	Jan-13	Feb-13	Mar-13
69.4%	70.2%	69.9%	63.4%	66.7%	68.3%	68.2%	64.9%	65.3%	65.4%	62.9%	62.9%	62.3%

Note: State Target is greater than or equal to 70%.

Food Stamp Participation Rate

Def: The ratio of number of food stamp persons over the estimated persons at or below 125% of the Poverty level.

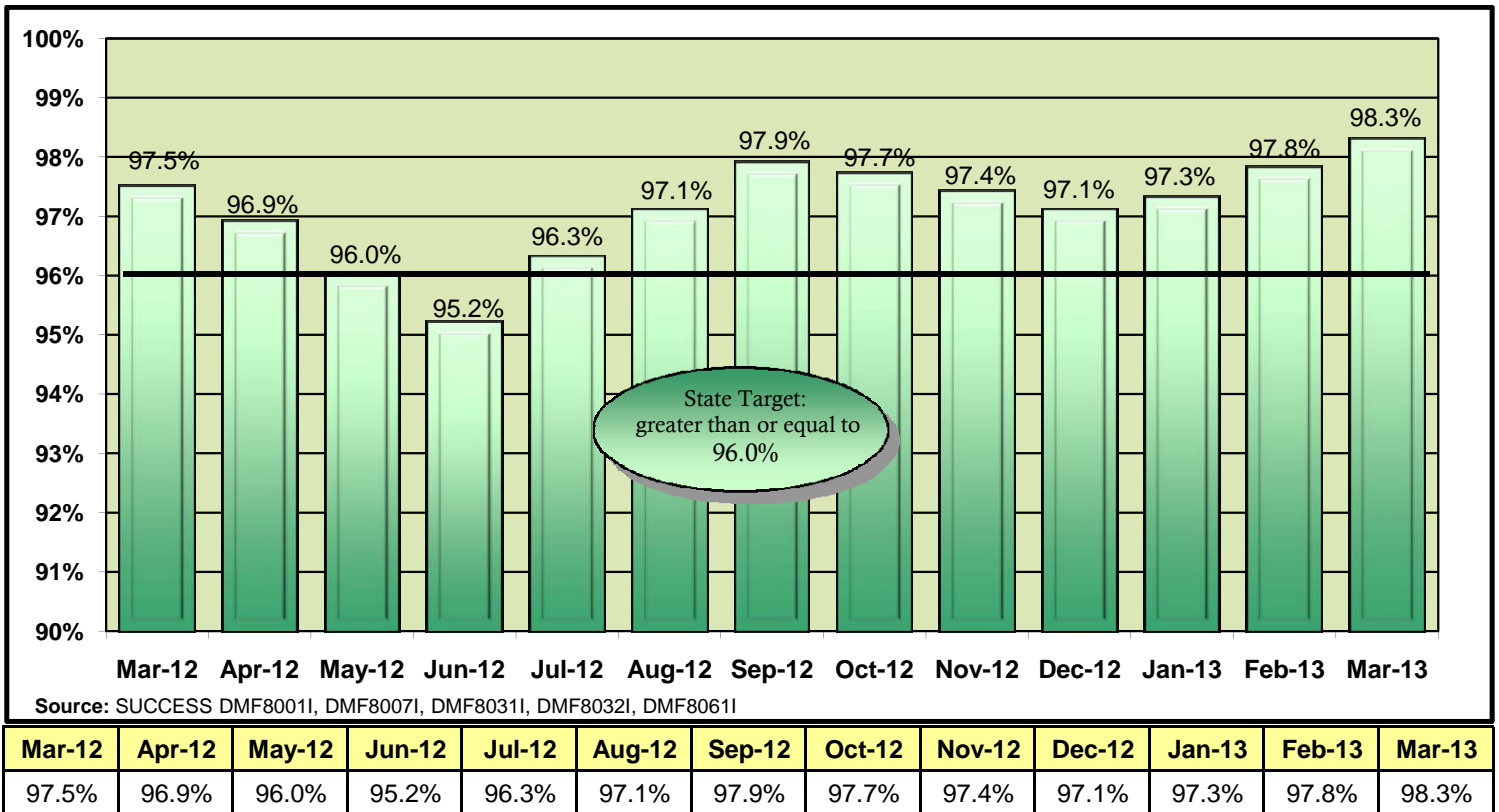


Sources: SUCCESS DMD 6929I, U.S. Census Bureau 2010 American Community Survey 5-year Estimates Data used for January 2012 - December 2012 report months, U.S. Census Bureau 2011 American Community Survey 5-year Estimates Data used for January 2013 - February 2013 report months.

Mar-12	Apr-12	May-12	Jun-12	Jul-12	Aug-12	Sep-12	Oct-12	Nov-12	Dec-12	Jan-13	Feb-13	Mar-13
99.9%	100.3%	101.2%	101.9%	102.3%	103.2%	102.8%	103.4%	103.8%	103.7%	97.8%	97.3%	97.1%

Medicaid (ABD) SOP

Def: Of all the Aged, Blind, Disabled Medicaid applications for benefits, the percentage that was completed within the mandated Standard of Promptness (SOP).



Medicaid (Family) SOP

Def: Of all the Family Medicaid applications for benefits, the percentage that was completed within the mandated Standard of Promptness (SOP).

